

WAAS CH <b>50433</b> <b>W31A</b>	APP CRS <b>307°</b>	Rwy Idg TDZE <b>5003</b> <b>589</b> Apt Elev <b>598</b>
--	------------------------	--

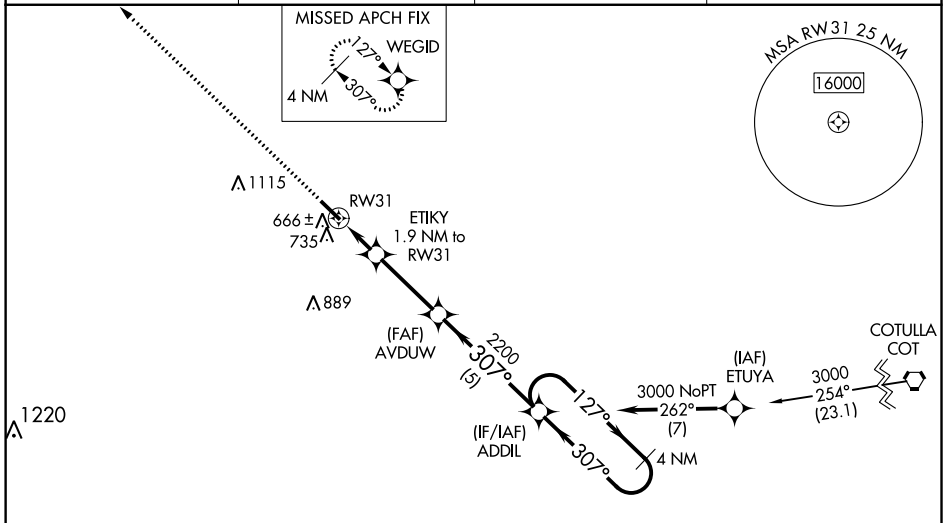
# RNAV (GPS) RWY 31

DIMIT COUNTY (CZT)

**NA** Baro-VNAV NA. DME/DME RNP-0.3 NA. Use Cotulla altimeter setting; when not received use Uvalde altimeter setting and increase all DA 52 feet, all MDA 60 feet and increase LPV all Cats, LNAV/VNAV all Cats, and Circling Cat C visibility ¼ mile. Helicopter visibility reduction below ¾ SM NA.

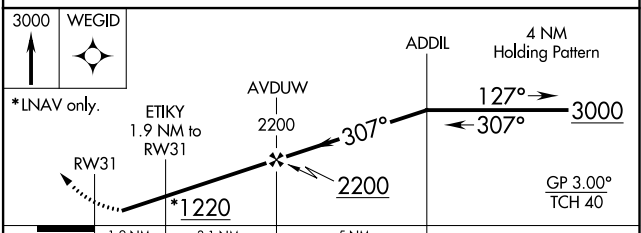
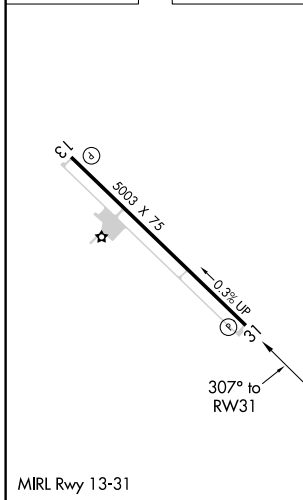
**MISSED APPROACH:** Climb to 3000 direct WEGID and hold.

AWOS-3 <b>119.625</b>	COT ASOS <b>118.325</b>	HOUSTON CENTER <b>127.8 307.5</b>	UNICOM <b>122.8</b> (CTAF)
--------------------------	----------------------------	--------------------------------------	-------------------------------



Procedure NA for arrivals at COT VORTAC on V17 northbound.

ELEV <b>598</b>	TDZE <b>589</b>
-----------------	-----------------



CATEGORY	A	B	C	D
LPV DA	931-1½		342 (400-1½)	NA
LNAV/VNAV DA	931-1½		342 (400-1½)	NA
LNAV MDA	1040-1	451 (500-1)	1040-1¾ 451 (500-1¾)	NA
<input checked="" type="checkbox"/> CIRCLING	1160-1 562 (600-1)	1240-1 642 (700-1)	1500-2¾ 902 (1000-2¾)	NA

SC-3, 25 FEB 2021 to 25 MAR 2021

SC-3, 25 FEB 2021 to 25 MAR 2021