

FRDMM FIVE ARRIVAL (RNAV) Arrival Routes

WASHINGTON, DC

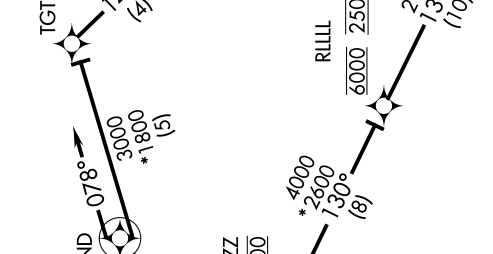
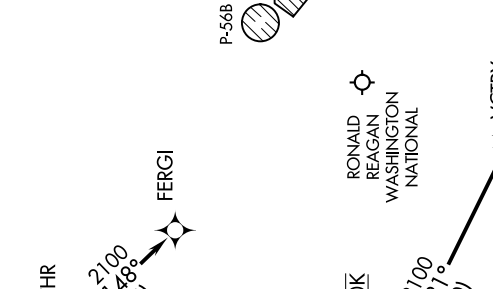
NE-3, 25 FEB 2021 to 25 MAR 2021

POTOMAC APP CON
118.675 323.175
DCA D-ATIS
132.65
KADW D-ATIS
133.675 251.05
KDAAA AAF ATIS
128.175

P-568

P-56A

JOINT BASE
ANDREWS



NOTE: Radar required.

NOTE: RNAV 1.

NOTE: DME/DME/IRU or GPS required.

NOTE: Turboprops only, turboprops as assigned by ATC only.

NOTE: Prohibited (P56) 1.5 NM north of DCA - avoid surface to FL180.

NOTE: Maintain last assigned altitude until cleared to "descend via" the FRDMM5. ARTCC will issue landing direction assignment (north or south) and Potomac TRACON will issue runway assignments.

ARRIVAL ROUTE DESCRIPTION

LANDING DCA RWYS 1, 4, 33, and ADW RWYS 1L/R and LANDING DAA: From ALWYZ on track 125° to cross LETZ at 8000, then on track 130° to cross RLLIL at 6000 and at 250K, then on track 131° to VCTRY, then on track 189° to HEROO, then on track 189°. Expect radar vectors to final approach course.

LANDING DCA RWYS 15, 19, 22: From ALWYZ on track 122° to cross FRDMM at 8000 and 240K, then on track 078° to STAND, then on track 078° to TGTHR, then on track 148° to FERG, expect LDA/DME RWY 19, RNAV (RNP) RWY 19, RIVER VISUAL RWY 19 or radar vectors to final approach course.

LANDING ADW RWYS 19L/R: From ALWYZ on track 122° to cross FRDMM at 8000 and at 240K, then on track 078° to STAND, then on track 078°. Expect radar vectors to final approach course.

FRDMM FIVE ARRIVAL (RNAV) Arrival Routes

WASHINGTON, DC

NE-3, 25 FEB 2021 to 25 MAR 2021

NOTE: Chart not to scale.