

NDB RWY 32

NDB DAA 223	APCH CRS 323°	Rwy ldg TDZE Arprt Elev 4519 68 74
-----------------------	-------------------------	--

AL-5504 [USA]

DAVISON AAF (KDAV)

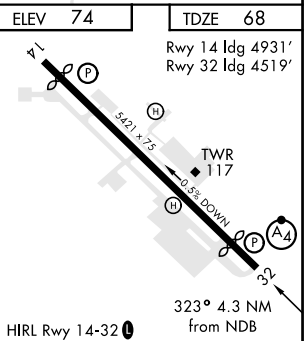
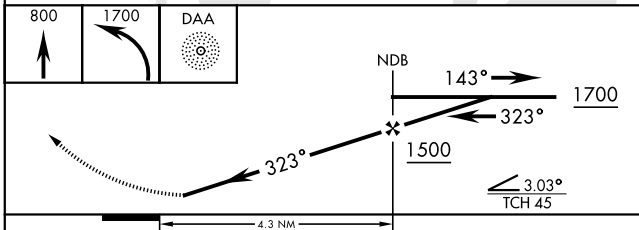
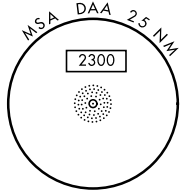
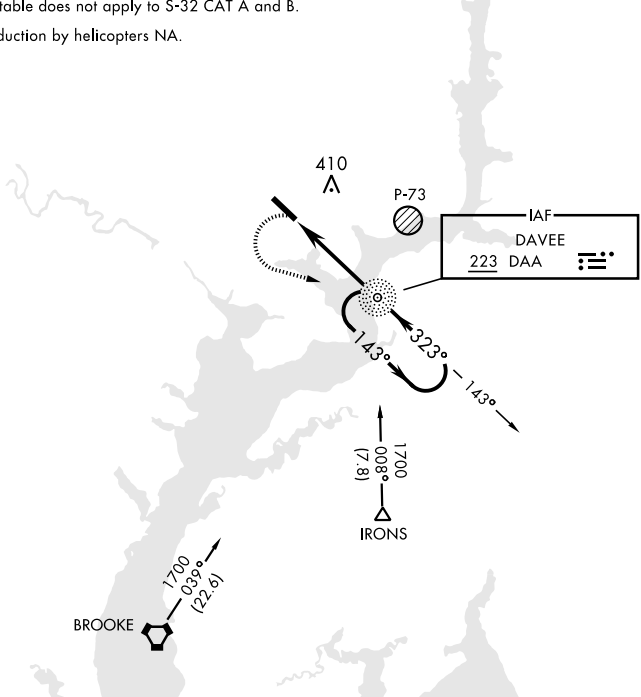
▼ * When ALS inop, increase CAT D vis to 2 ¼ miles.
 ** If local altimeter setting not received, use Ronald Reagan Washington National altimeter setting.



MISSED APPROACH: Climb to 800 then climbing left turn to 1700 direct DAA NDB and hold.

ATIS 128.175	POTOMAC APP CON 118.95 319.1	DAVISON TOWER ★ 126.3 (CTAF) 0 229.4	GND CON 121.9 351.8	CLNC DEL 351.8	PAR
------------------------	--	--	-------------------------------	--------------------------	-----

Inoperative table does not apply to S-32 CAT A and B.
 Visibility reduction by helicopters NA.



CATEGORY	A		B		C		D	
	1	2	1	2	1	2	1	2
S-32 *	740	50	672	(700-1)	740-1 ¾	672 (700-1 ¾)	740-2	672 (700-2)
CIRCLING	740-1	666 (700-1)	740-1 ¾	666 (700-1 ¾)	740-1 ¾	666 (700-1 ¾)	760-2 ¼	686 (700-2 ¼)
** RONALD REAGAN WASHINGTON NATIONAL ALTIMETER SETTING MINIMUMS								
S-32 *	780	50	712	(800-1)	780-1 ¾	712 (800-1 ¾)	780-2	712 (800-2)
CIRCLING	780-1	706 (800-1)	780-1 ¾	706 (800-1 ¾)	780-1 ¾	706 (800-1 ¾)	800-2 ¼	726 (800-2 ¼)

FORT BELVOIR, VIRGINIA
 Amdt 12C 16JUL20

38°43'N-77°11'W

DAVISON AAF (KDAV)

NDB RWY 32

NE-3, 25 FEB 2021 to 25 MAR 2021

NE-3, 25 FEB 2021 to 25 MAR 2021