

FORT BELVOIR, VIRGINIA

# RNAV (GPS) RWY 14

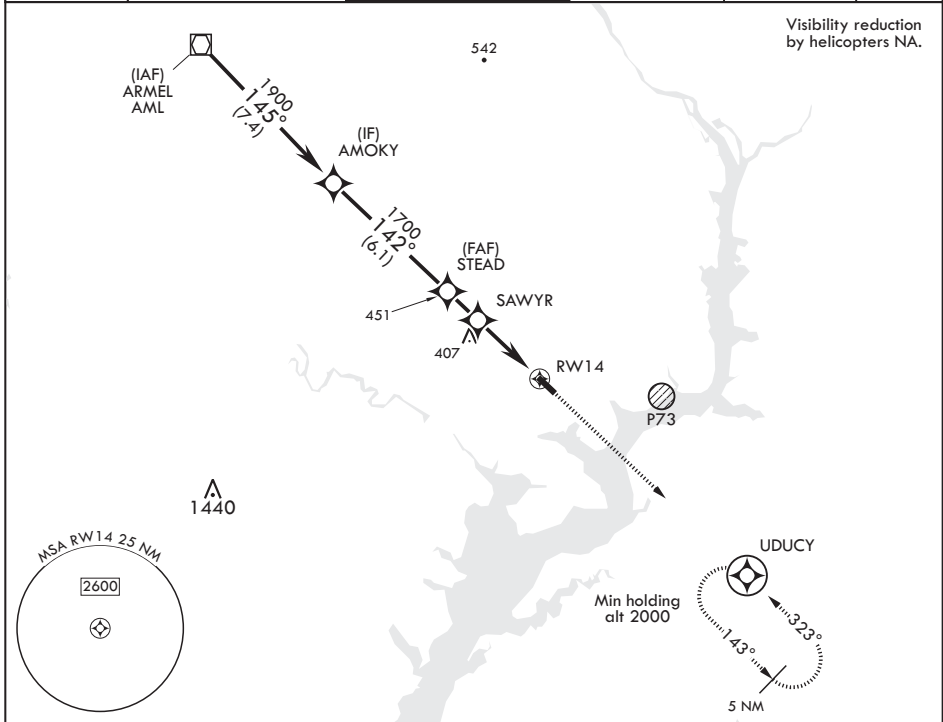
APCH CRS	Rwy Idg	4931
142°	TDZE	60
	Arprt Elev	74

AL-5504 (USA)

DAVISON AAF (KDAV)

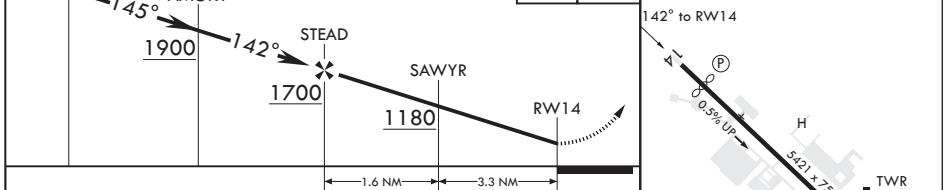
**V** \* If local altimeter setting not received, use Ronald Reagan Washington National altimeter setting. DME/DME RNP-0.3 NA. MISSED APPROACH: Climb to 2000 direct UDCY and hold.

ATIS <b>128.175</b>	POTOMAC APP CON <b>118.95 319.1</b>	TOWER * <b>126.3 (CTAF) 0 229.4</b>	GND CON <b>121.9 351.8</b>	CLNC DEL <b>351.8</b>	PAR
------------------------	--	--	-------------------------------	--------------------------	-----



NE-3, 25 FEB 2021 to 25 MAR 2021

NE-3, 25 FEB 2021 to 25 MAR 2021



CATEGORY	A	B	C	D
LNVA MDA	660-1	600 (600-1)	660-1¾ 600 (600-1¾)	660-2 600 (600-2)
CIRCLING	740-1	666 (700-1)	740-1¾ 666 (700-1¾)	760-2¼ 686 (700-2¼)
*RONALD REAGAN WASHINGTON NATIONAL ALTIMETER SETTING MINIMUMS				
LNVA MDA	700-1	640 (700-1)	700-2	640 (700-2)
CIRCLING	780-1	706 (800-1)	780-2 706 (800-2)	800-2¼ 726 (800-2¼)

HIRL all Rwy's

FORT BELVOIR, VIRGINIA  
Amdt 2B 16JUL20

38°43'N - 77°11'W

DAVISON AAF (KDAV)

# RNAV (GPS) RWY 14