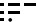



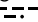
# LAMMA SEVEN DEPARTURE

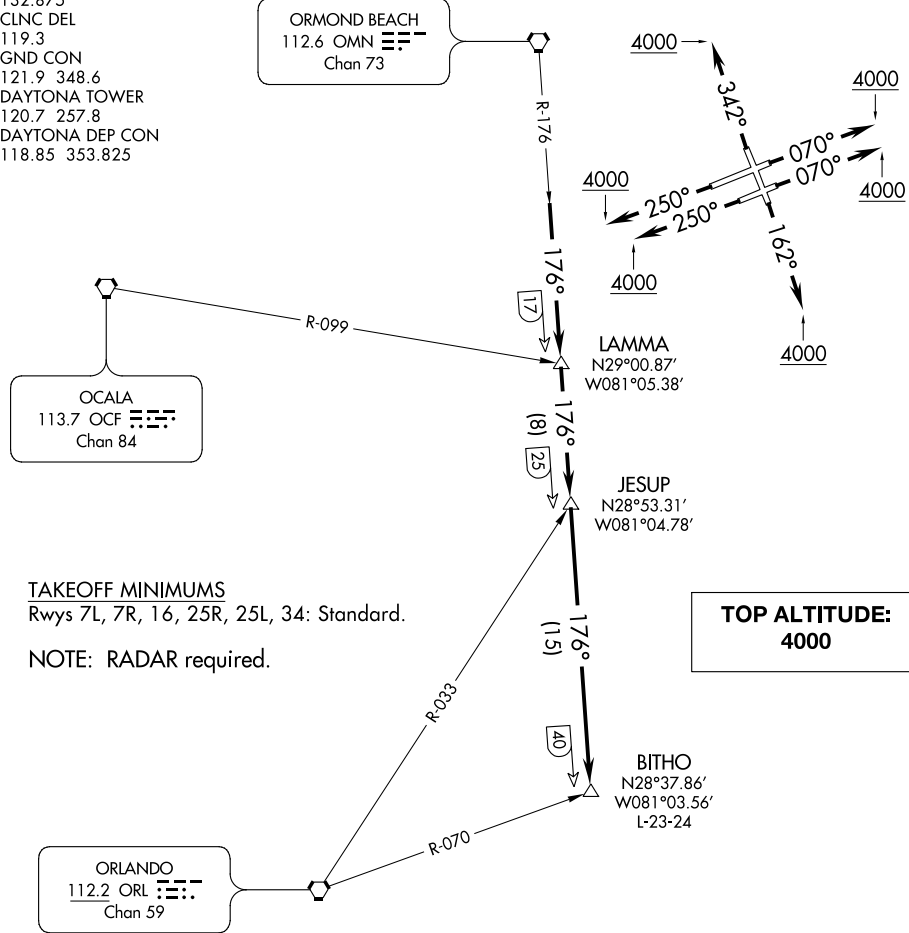
ATIS  
132.875  
CLNC DEL  
119.3  
GND CON  
121.9 348.6  
DAYTONA TOWER  
120.7 257.8  
DAYTONA DEP CON  
118.85 353.825

ORMOND BEACH  
112.6 OMN   
Chan 73

OCALA  
113.7 OCF   
Chan 84

**TAKEOFF MINIMUMS**  
Rwys 7L, 7R, 16, 25R, 25L, 34: Standard.  
**NOTE: RADAR required.**

ORLANDO  
112.2 ORL   
Chan 59



**TOP ALTITUDE:**  
**4000**

NOTE: Chart not to scale.

## DEPARTURE ROUTE DESCRIPTION

- TAKEOFF RUNWAY 7L:** Climb heading 070° to 4000 or as assigned by ATC, thence . . . .
- TAKEOFF RUNWAY 7R:** Climb heading 070° to 4000 or as assigned by ATC, thence . . . .
- TAKEOFF RUNWAY 16:** Climb heading 162° to 4000 or as assigned by ATC, thence . . . .
- TAKEOFF RUNWAY 25R:** Climb heading 250° to 4000 or as assigned by ATC, thence . . . .
- TAKEOFF RUNWAY 25L:** Climb heading 250° to 4000 or as assigned by ATC, thence . . . .
- TAKEOFF RUNWAY 34:** Climb heading 342° to 4000 or as assigned by ATC, thence . . . .

. . . . Expect vectors to intercept OMN R-176 to BITHO INT/OMN 40 DME, then via assigned route. Expect clearance to filed altitude. Flight level ten (10) minutes after departure.

# LAMMA SEVEN DEPARTURE