

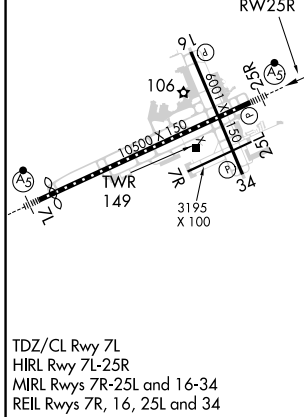
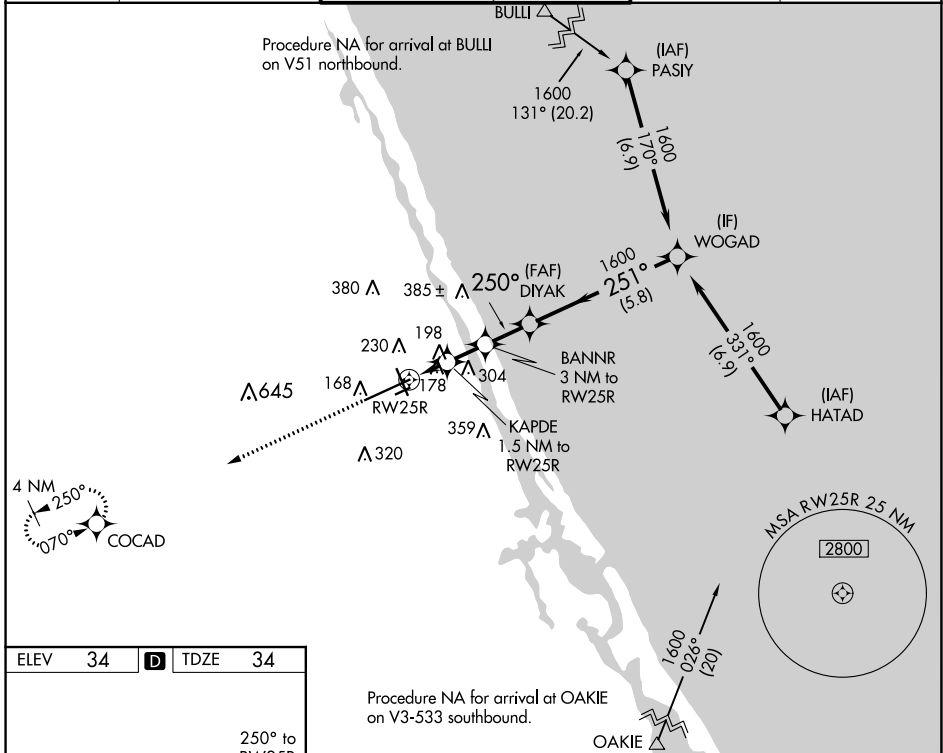
WAAS CH 77533 W25A	APP CRS 250°	Rwy Idg 10293 TDZE 34 Apt Elev 34
--	------------------------	--

RNAV (GPS) RWY 25R

DAYTONA BEACH INTL (DAB)

DME/DME RNP-0.3 NA.		MALSR 	MISSED APPROACH: Climb to 1700 direct COCAD and hold.	
---------------------	--	-----------	---	--

ATIS 132.875	DAYTONA APP CON 125.8 269.075	DAYTONA TOWER 118.1 257.8 (Rwys 7R-25L) 120.7 257.8 (Rwys 7L-25R, 16-34)	GND CON 121.9 348.6	CLNC DEL 119.3
------------------------	---	--	-------------------------------	--------------------------



Procedure NA for arrival at OAKIE on V3-533 southbound.

1700 COCAD	VGSI and descent angles not coincident (VGSI Angle 3.00/TCH 72)			
		DIYAK	WOGAD	
1.5 NM		1.5 NM	1.8 NM	5.8 NM
CATEGORY	A	B	C	D
LP MDA	440- ¹ / ₂	407 (500- ¹ / ₂)	440- ³ / ₄	407 (500- ³ / ₄)
LNAV MDA	460- ¹ / ₂	426 (500- ¹ / ₂)	460- ³ / ₄	426 (500- ³ / ₄)
C CIRCLING	540-1	506 (600-1)	680- ¹ / ₄ 646 (700- ¹ / ₄)	700-2 666 (700-2)

SE-3, 25 FEB 2021 to 25 MAR 2021

SE-3, 25 FEB 2021 to 25 MAR 2021