

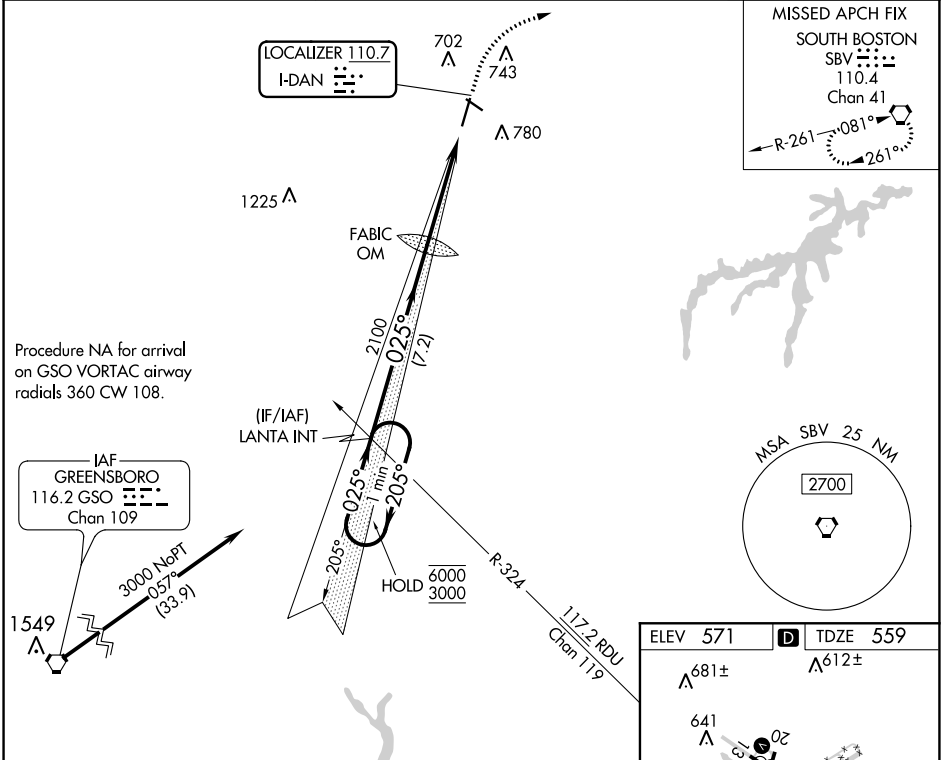
LOC I-DAN <b>110.7</b>	APP CRS <b>025°</b>	Rwy Idg TDZE Apt Elev	<b>5600</b> <b>559</b> <b>571</b>
---------------------------	------------------------	-----------------------------	---

# ILS or LOC RWY 2

DANVILLE RGNL (DAN)

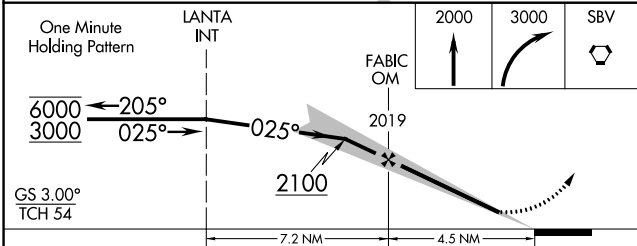
<p>For inop ALS, increase S-LOC 2 Cat C/D visibility to 1 3/8 SM.</p>	MALSR 	MISSED APPROACH: Climb to 2000 then climbing right turn to 3000 direct SBV VORTAC and hold.

ASOS <b>128.125</b>	WASHINGTON CENTER <b>124.05 307.0</b>	UNICOM <b>123.05 (CTAF)</b>
------------------------	--	--------------------------------



NE-3, 25 FEB 2021 to 25 MAR 2021

NE-3, 25 FEB 2021 to 25 MAR 2021



CATEGORY	A	B	C	D
S-ILS 2	759-1/2 200 (200-1/2)			
S-LOC 2	1020-1/2	461 (500-1/2)	1020-1	461 (500-1)
CIRCLING	1120-1	549 (600-1)	1120-1 1/2	1200-2
			549 (600-1 1/2)	629 (700-2)

ELEV 571		TDZE 559
----------	--	----------

HIRL Rwy 2-20   
MIRL Rwy 13-31   
REIL Rws 13, 20 and 31

Knots	60	90	120	150	180
Min:Sec	4:30	3:00	2:15	1:48	1:30