

WAAS CH 78338 W02A	APP CRS 020°	Rwy Idg TDZE 299 Apt Elev 311
--	------------------------	---

RNAV (GPS) RWY 2

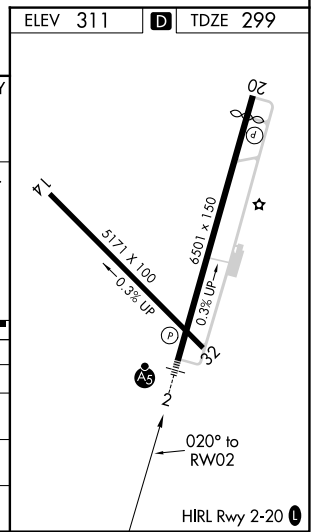
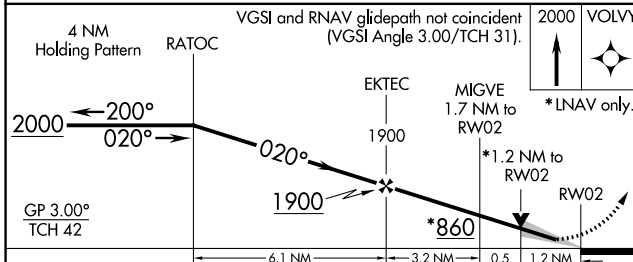
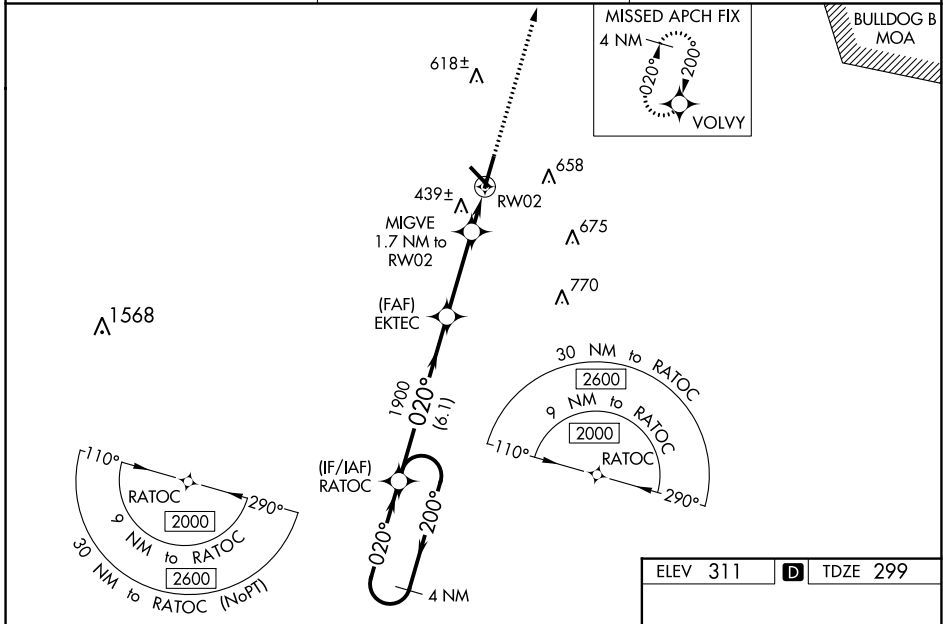
W H 'BUD' BARRON (DBN)

▼ Night landing: Rwy 32 NA. For uncompensated Baro-VNAV systems, LNAV/VNAV NA below -15°C (5°F) or above 54°C (130°F). Baro-VNAV and VDP NA when using Vidalia altimeter setting. DME/DME RNP-0.3 NA. When local altimeter setting not received, use Vidalia altimeter setting and increase LPV DA to 593 feet and LNAV/VNAV DA to 849 feet and all MDA 100 feet; increase LNAV/VNAV all Cats visibility 3/8 mile and LNAV Cats C/D visibility and Circling Cats C/D visibility 1/4 mile. For inop MALS, increase LNAV Cat C/D visibility to 1 1/8 mile. For inop MALS when using Vidalia altimeter setting, increase LPV all Cats visibility to 1 mile, LNAV/VNAV all Cats visibility to 1 1/8 mile and LNAV Cat C/D visibility to 1 3/8 mile.

MALS
A5

MISSED APPROACH:
Climb to 2000 direct VOLVY and hold.

AWOS-3 118.425	ATLANTA APP CON * 124.2 279.6	UNICOM 122.7 (CTAF)
--------------------------	---	-------------------------------



CATEGORY	A	B	C	D
LPV DA		499-1/2	200 (200-1/2)	
LNAV/VNAV DA		755-1 1/8	456 (500-1 1/8)	
LNAV MDA	700-1/2	401 (400-1/2)	700-3/4	401 (400-3/4)
C CIRCLING	760-1 449 (500-1)	780-1 469 (500-1)	1020-2 709 (800-2)	1020-2 1/4 709 (800-2 1/4)

SE-4, 25 FEB 2021 to 25 MAR 2021

SE-4, 25 FEB 2021 to 25 MAR 2021