

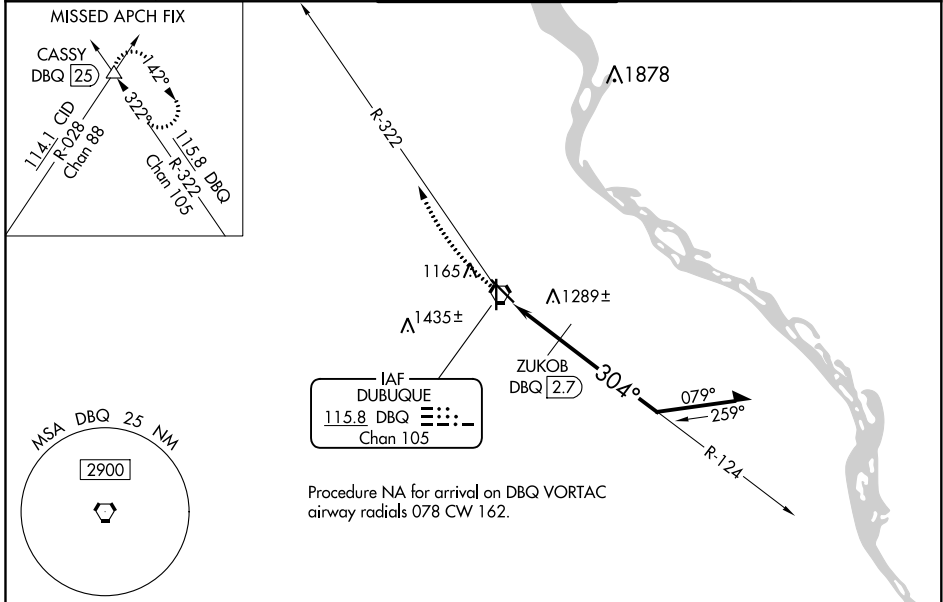
VORTAC DBQ 115.8 Chan 105	APP CRS 304°	Rwy Idg 6502 TDZE 1062 Apt Elev 1077
--	------------------------	---

VOR RWY 31

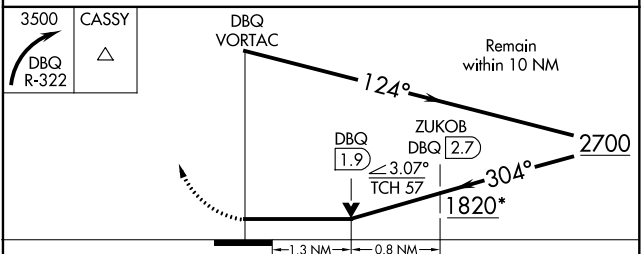
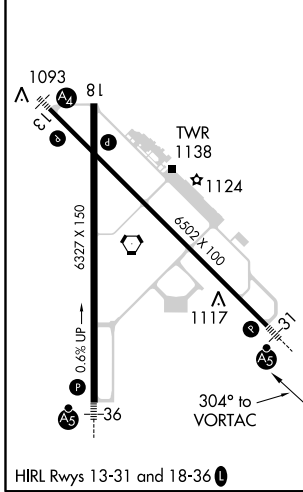
DUBUQUE RGNL (DBQ)

<p>V A</p> <p>VOR minimums: For inop ALS, increase S-31 Cats C and D visibility to 2 SM.</p> <p>34 -34°C/-29°F</p> <p>ZUKOB fix minimums: For inop ALS, increase S-31 Cats C and D visibility to 1 3/8 SM.</p>	<p>MALSR</p>	<p>MISSED APPROACH: Climbing right turn to 3500 on DBQ VORTAC R-322 to CASSY INT/ 25 DME and hold.</p>
---	--------------	--

<p>ATIS 127.25</p>	<p>CHICAGO CENTER 133.95 281.4</p>	<p>DUBUQUE TOWER* 119.5 (CTAF) 254.4</p>	<p>GND CON 121.8</p>	<p>UNICOM 122.95</p>
-------------------------------	---	---	---------------------------------	---------------------------------



ELEV 1077	D	TDZE 1062
-----------	----------	-----------



CATEGORY	A	B	C	D
S-31	1820-1/2 758 (800-1/2)	1820-3/4 758 (800-3/4)	1820-1 3/4	758 (800-1 3/4)
C CIRCLING	1820-1 743 (800-1)	1820-1 1/4 743 (800-1 1/4)	1820-2 1/4 743 (800-2 1/4)	1820-2 1/2 743 (800-2 1/2)
ZUKOB FIX MINIMUMS				
S-31	1540-1/2	478 (500-1/2)	1540-1	478 (500-1)
C CIRCLING	1580-1 503 (600-1)	1600-1 523 (600-1)	1600-1 1/2 523 (600-1 1/2)	1800-2 723 (800-2)