

LOC/DME I-DCU 110.55 Chan 42 (Y)	APP CRS 185°	Rwy Idg TDZE Apt Elev	6107 592 592
---	------------------------	-----------------------------	---

ILS Y OR LOC Y RWY 18

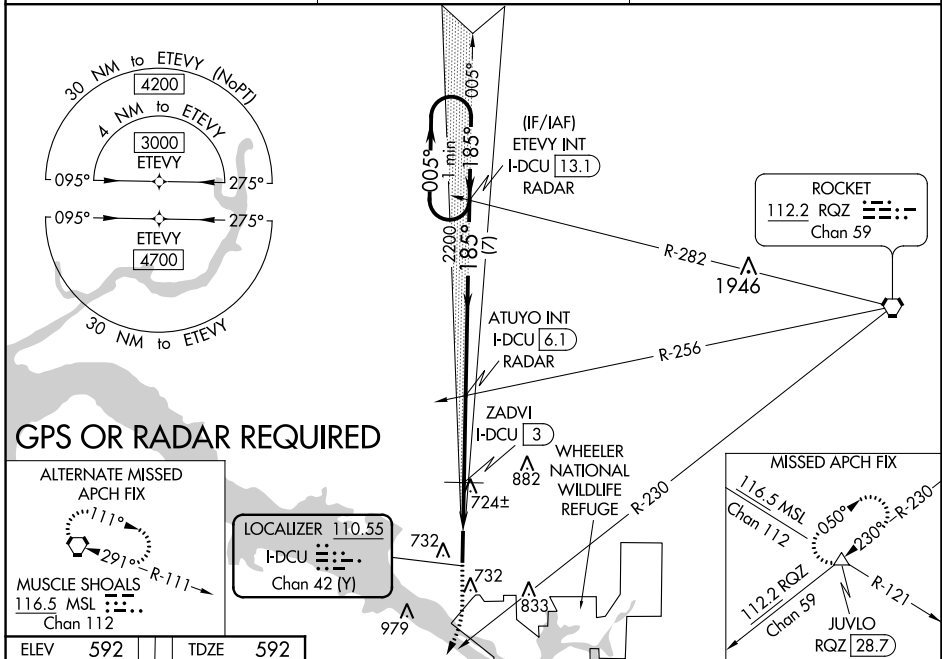
PRYOR FIELD RGNL (DCU)

▼ When local altimeter setting not received, use Huntsville Int-Carl T Jones Field altimeter setting: increase DA to 817 feet; increase all MDAs 40 feet and S-LOC 18 visibility Cats C and D ½ mile. VDP NA with Huntsville Int-Carl T Jones Field altimeter setting.

▲

MISSED APPROACH: Climb to 1700 then climbing right turn to 3000 on RQZ VORTAC R-230 to JUVLO INT/RQZ 28.7 DME and hold.

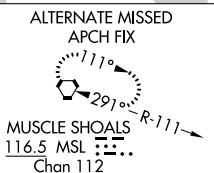
ASOS 118.375	HUNTSVILLE APP CON ★ 118.05 239.0	UNICOM 123.075 (CTAF) 0
------------------------	---	-----------------------------------



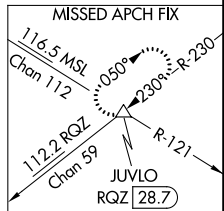
SE-4, 25 FEB 2021 to 25 MAR 2021

SE-4, 25 FEB 2021 to 25 MAR 2021

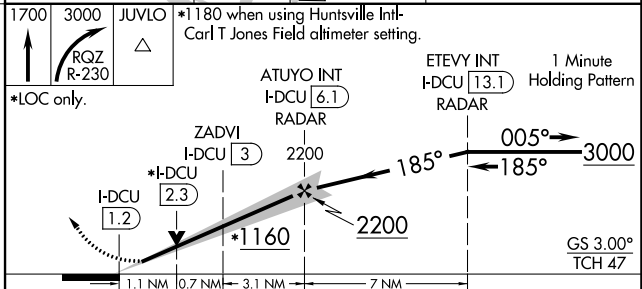
GPS OR RADAR REQUIRED



LOCALIZER 110.55
I-DCU
Chan 42 (Y)



ELEV 592	TDZE 592
----------	----------



HIRL Rwy 18-36
REIL Rwys 18 and 36

FAF to MAP 4.9 NM

Knots	60	90	120	150	180
Min:Sec	4:54	3:16	2:27	1:58	1:38

CATEGORY	A	B	C	D
S-ILS 18	792-¾		200 (200-¾)	
S-LOC 18	1160-1	568 (600-1)	1160-1½	568 (600-1½)
CIRCLING	1160-1	568 (600-1)	1340-2¼ 748 (800-2¼)	1340-2½ 748 (800-2½)
ZADVI FIX MINIMUMS				
S-LOC 18	980-1	388 (400-1)	980-1½	388 (400-1½)
CIRCLING	1040-1 448 (500-1)	1060-1 468 (500-1)	1340-2¼ 748 (800-2¼)	1340-2½ 748 (800-2½)