

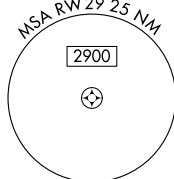
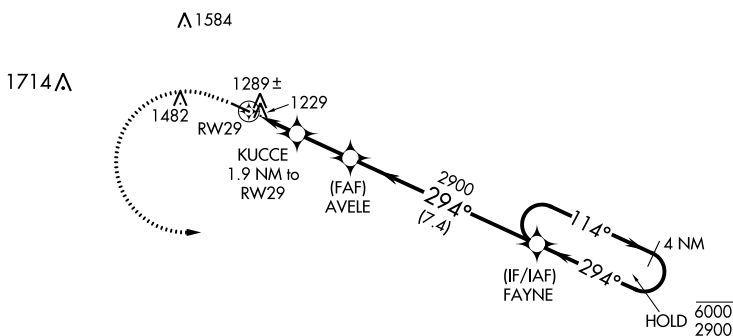
APP CRS <b>294°</b>	Rwy Idg <b>4001</b>
	TDZE <b>1158</b>
	Apt Elev <b>1158</b>

# RNAV (GPS) RWY 29

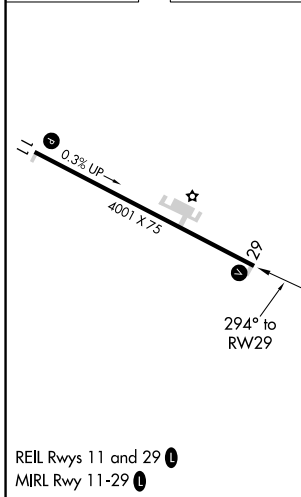
DECORAH MUNI (DEH)

RNP APCH.	MISSED APPROACH: Climb to 1800 then climbing left turn to 2900 direct FAYNE and hold.
Rwy 29 helicopter visibility reduction below 1 SM NA.	

AWOS-3 <b>120.925</b>	MINNEAPOLIS CENTER <b>118.85</b>	UNICOM <b>122.8 (CTAF) 0</b>
--------------------------	-------------------------------------	---------------------------------



ELEV 1158	TDZE 1158
-----------	-----------



1800	2900	FAYNE	VGSI and descent angles not coincident (VGSI Angle 4.00/TCH 58).	
			AVELE	FAYNE
			4 NM Holding Pattern	
	KUCCE 1.9 NM to RWY 29	AVELE 2.1 NM to RWY 29	FAYNE 7.4 NM to RWY 29	4 NM Holding Pattern
	2000	2900	2900	6000 / 2900
	1.9 NM	2.1 NM	7.4 NM	
CATEGORY	A	B	C	D
LNAV MDA	1540-1	382 (400-1)	NA	
CIRCLING	1600-1 442 (500-1)	1620-1 462 (500-1)	NA	

NC-3, 25 FEB 2021 to 25 MAR 2021

NC-3, 25 FEB 2021 to 25 MAR 2021