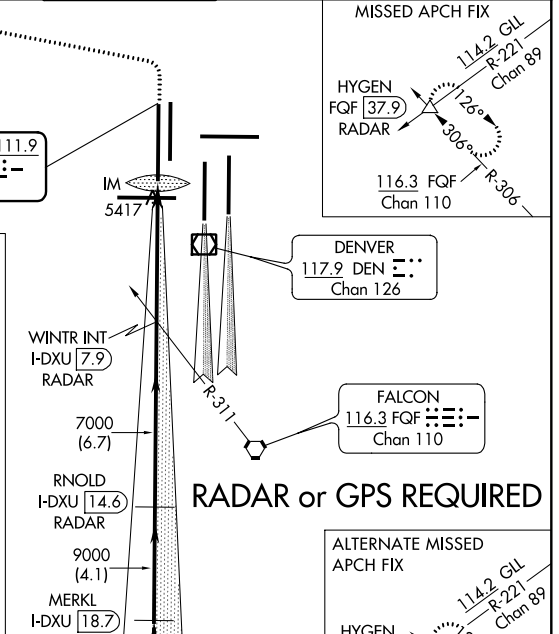
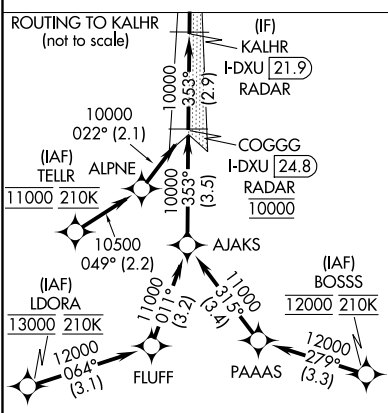
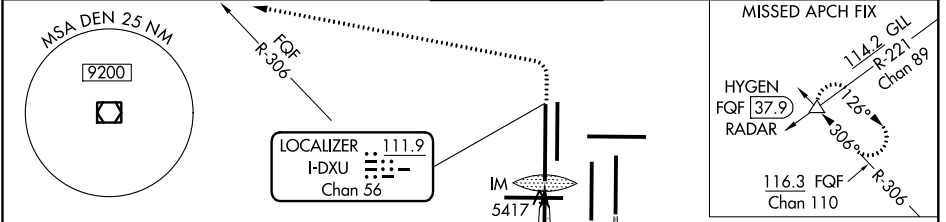


LOC/DME I-DXU 111.9 Chan 56	APP CRS 353°	Rwy Idg TDZE Apt Elev 16000 5327 5434
--	------------------------	---

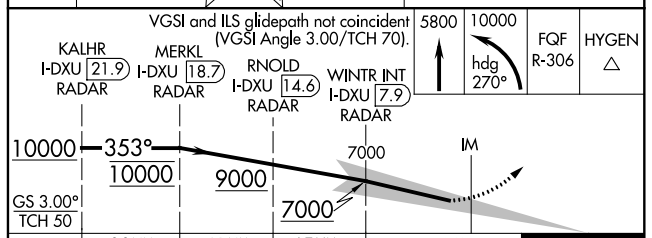
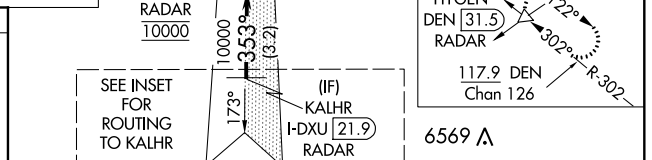
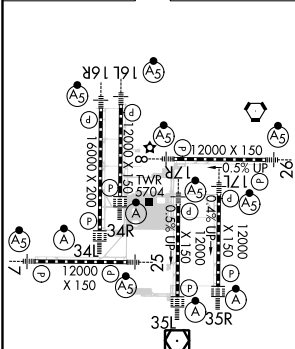
ILS RWY 34L (SA CAT I)

DENVER INTL (DEN)

▼ RADAR or DME required. Requires specific OPSPEC, MSPEC, or LOA approval and use of HUD to DH. Simultaneous approach authorized with Rwy 35L/R.		ALSF-2 	MISSED APPROACH: Climb to 5800 then climbing left turn to 10000 on heading 270° and on FQG VORTAC R-306 to HYGEN/FQG 37.9 DME/RADAR and hold.		
D-ATIS ARR 125.6 379.9 DEP 134.025	DENVER APP CON 119.3 307.3 120.35 379.3 (NORTH) (SOUTH)	DENVER TOWER 135.3 351.95	GND CON 127.5 379.175	CLNC DEL 118.75	CPDLC



ELEV 5434	D	TDZE 5327
-----------	----------	-----------



CATEGORY	A	B	C	D
S-ILS 34L	RA 148/14 150 DA 5477			

SA CATEGORY I ILS - SPECIAL AIRCREW & AIRCRAFT CERTIFICATION REQUIRED

SW-1, 25 FEB 2021 to 25 MAR 2021

SW-1, 25 FEB 2021 to 25 MAR 2021