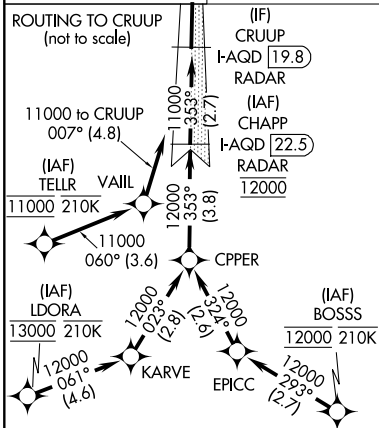
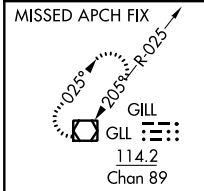


LOC/DME I-AQD 108.5 Chan 22	APP CRS 353°	Rwy Idg 12000 TDZE 5434 Apt Elev 5434
---	------------------------	--

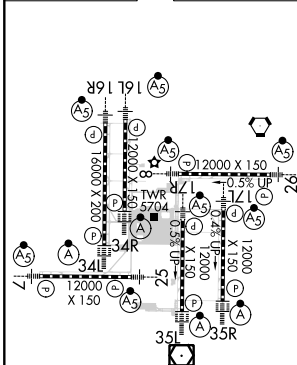
ILS RWY 35L (CAT II & III)

DENVER INTL (DEN)

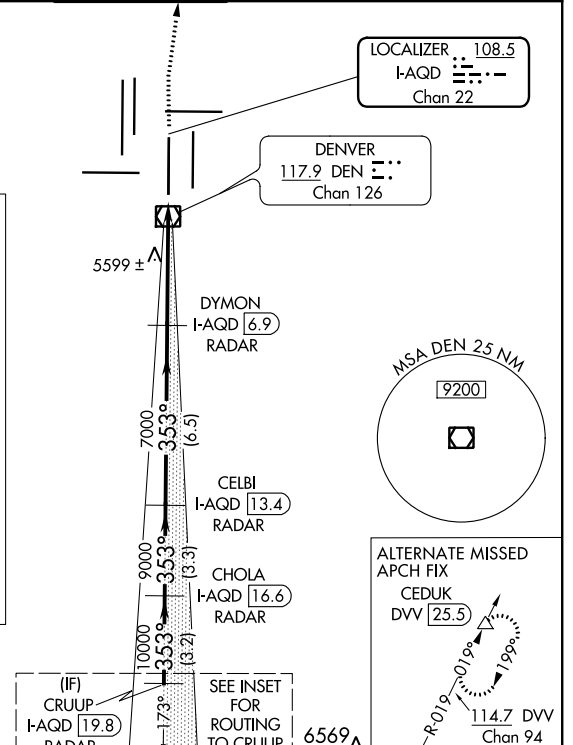
RNAV 1-GPS or RADAR required for procedure entry.		ALSF-2	MISSED APPROACH: Climb to 10000 then right turn direct GLL VOR/DME and hold.			
D-ATIS ARR 125.6 379.9 DEP 134.025	DENVER APP CON 119.3 307.3 120.35 379.3 (NORTH) (SOUTH)		DENVER TOWER 133.3 322.45	GND CON 121.85 377.1	CLNC DEL 118.75	CPDLC



ELEV 5434	D	TDZE 5434
-----------	----------	-----------

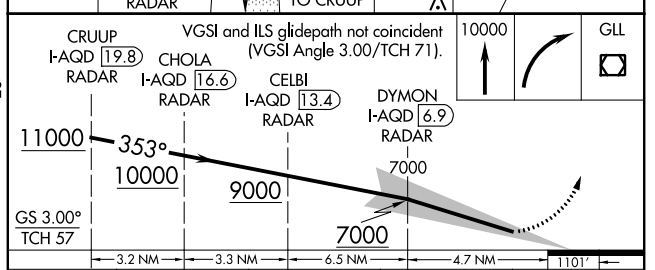
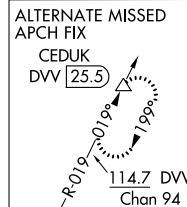
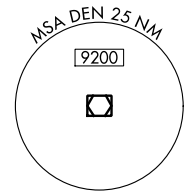


HIRL off Rwys
TDZ/CL Rwys 7, 16L, 16R, 17R, 26, 34L, 34R, 35L, 35R



LOCALIZER **108.5**
I-AQD **108.5**
Chan **22**

DENVER **117.9** DEN **117.9**
Chan **126**



CATEGORY	A	B	C	D
S-ILS 35L	CAT II RA 115/12 100 DA 5534			
S-ILS 35L	CAT III RVR 03			

CATEGORY II & III ILS - SPECIAL AIRCREW & AIRCRAFT CERTIFICATION REQUIRED

SW-1, 25 FEB 2021 to 25 MAR 2021

SW-1, 25 FEB 2021 to 25 MAR 2021