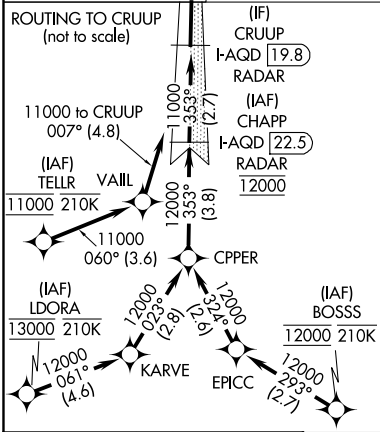
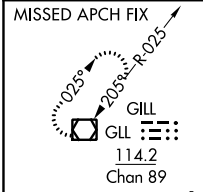


| | | |
|---|------------------------|--|
| LOC/DME I-AQD 108.5 Chan 22 | APP CRS 353° | Rwy Idg 12000 TDZE 5434 Apt Elev 5434 |
|---|------------------------|--|

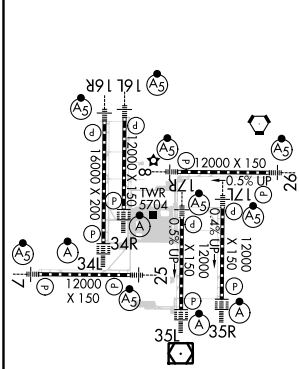
ILS RWY 35L (SA CAT I)

DENVER INTL (DEN)

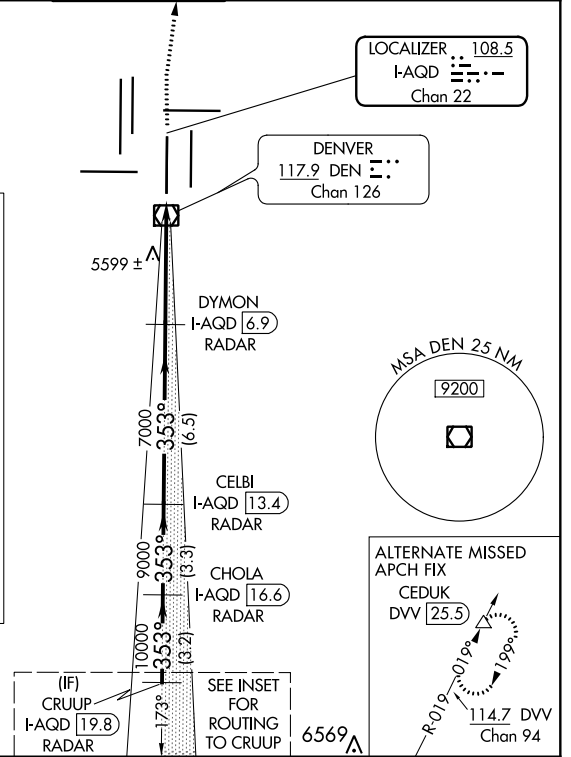
| | | | | | | |
|--|---|--------------------------------|--|--------------------------------|---------------------------|-------|
| RNAV 1-GPS or RADAR required for procedure entry. | | ALSIF-2 | MISSED APPROACH: Climb to 10000 then right turn direct GLL VOR/DME and hold. | | | |
| Simultaneous approach authorized. Requires specific OPSPEC, MSPEC, or LOA approval and use of HUD to DH. | | | | | | |
| D-ATIS ARR 125.6 379.9 DEP 134.025 | DENVER APP CON 119.3 307.3 (NORTH) | 120.35 379.3 (SOUTH) | DENVER TOWER 133.3 322.45 | GND CON 121.85 377.1 | CLNC DEL 118.75 | CPDLC |



ELEV 5434 **D** TDZE 5434

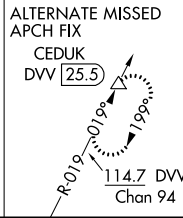
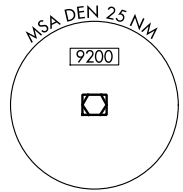


HIRL all Rwys
TDZ/CL Rwys 7, 16L, 16R, 17R, 26, 34L, 34R, 35L, 35R

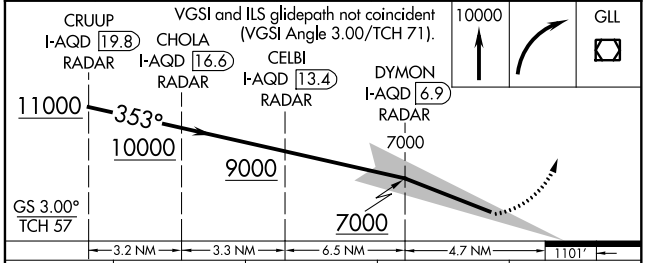


LOCALIZER **108.5**
I-AQD
Chan **22**

DENVER **117.9** DEN
Chan **126**



(IF) CRUUP I-AQD **19.8** RADAR
SEE INSET FOR ROUTING TO CRUUP
6569 Δ



| | | | | |
|-----------|-----------------------|---|---|---|
| CATEGORY | A | B | C | D |
| S-ILS 35L | RA 165/14 150 DA 5584 | | | |

SA CATEGORY I ILS - SPECIAL AIRCREW & AIRCRAFT CERTIFICATION REQUIRED

SW-1, 25 FEB 2021 to 25 MAR 2021

SW-1, 25 FEB 2021 to 25 MAR 2021