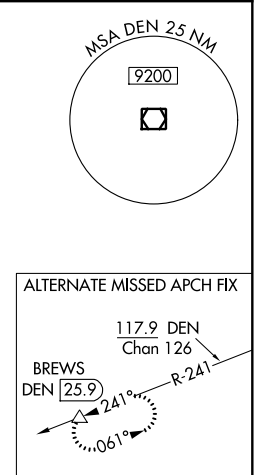
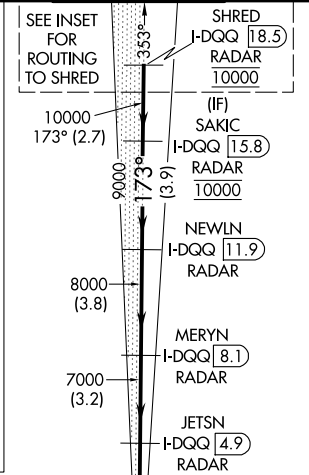
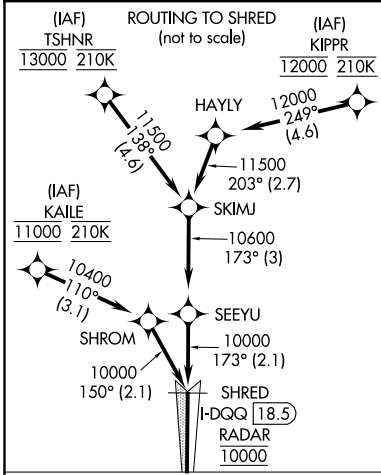


LOC/DME I-DQQ 111.9 Chan 56	APP CRS 173°	Rwy Idg 16000 TDZE 5326 Apt Elev 5434
---	------------------------	--

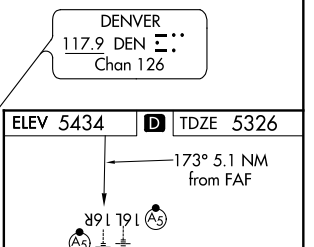
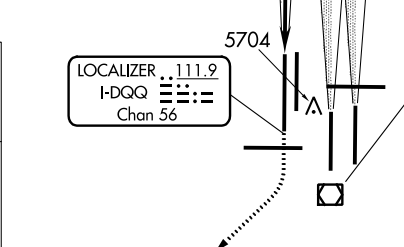
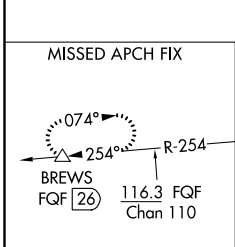
ILS or LOC RWY 16R

DENVER INTL (DEN)

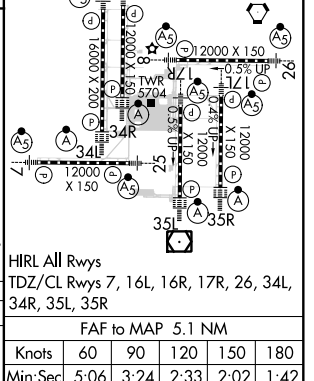
▼ For inoperative MALS/R, increase S-LOC Cat C/D visibility to RVR 4500. Simultaneous approach authorized with Rwy 17L and 17R. DME required.	MALS/R	MISSED APPROACH: Climb to 5900 then climbing right turn to 12000 on heading 218° and on FGF VORTAC R-254 to BREWS/FQF 26 DME and hold.
	D-ATIS ARR 125.6 379.9 DEF 134.025	DENVER APP CON 119.3 307.3 120.35 379.3 (NORTH) (SOUTH)
	GND CON 127.5 379.175	CLNC DEL 118.75
		CPDLC



RADAR or GPS REQUIRED



5900	12000	FQF R-254	BREWS △	VGSI and ILS glidepath not coincident (VGSI Angle 3.00/TCH 71).
*LOC only				
JETSN I-DQQ 4.9 RADAR		MERYN I-DQQ 8.1 RADAR	NEWLN I-DQQ 11.9 RADAR	SHRED I-DQQ 18.5 RADAR
*I-DQQ 0.6		7000	8000	9000
7000		8000	9000	10000
0.8		4.3 NM	3.2 NM	3.8 NM
3.8 NM		3.9 NM	2.7 NM	
CATEGORY	A	B	C	D
S-ILS 16R	5526/18 200 (100-½)			
S-LOC 16R	5640/24 314 (300-½)			



SW-1, 25 FEB 2021 to 25 MAR 2021

SW-1, 25 FEB 2021 to 25 MAR 2021