

LOC/DME I-ERP <b>111.55</b> Chan <b>52 (Y)</b>	APP CRS <b>263°</b>	Rwy Idg <b>12000</b> TDZE <b>5355</b> Apt Elev <b>5434</b>
--	------------------------	--

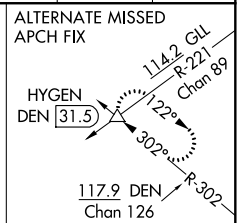
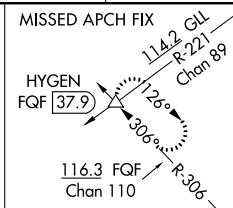
# ILS or LOC RWY 25

DENVER INTL (DEN)

**MAJRS** MISSED APPROACH: Climb to 10000 on heading 263° and on FGF VORTAC R-306 to HYGEN INT/FQF 37.9 DME and hold.

Simultaneous approach authorized with Rwy 26. For inoperative MAJRS, increase S-LOC 25 Cat C and D visibility to RVR 5500.  
\*\*RVR 1800 authorized with use of FD or AP or HUD to DA.

D-ATIS ARR <b>125.6 379.9</b> DEP <b>134.025</b>	DENVER APP CON <b>119.3 307.3</b> (NORTH) <b>120.35 379.3</b> (SOUTH)	DENVER TOWER <b>128.75 273.55</b>	GND CON <b>127.5 379.175</b>	CLNC DEL <b>118.75</b>	CPDLC
--	---	--------------------------------------	---------------------------------	---------------------------	-------

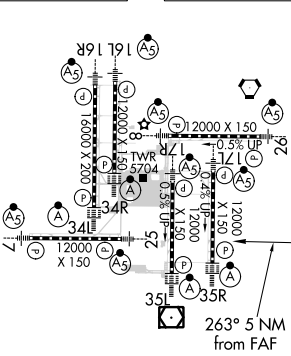


LOCALIZER .. **111.55**  
I-ERP **5.0**  
Chan **52 (Y)**

DENVER **117.9 DEN** **5.0**  
Chan **126**

FALCON **116.3 FQF** **5.0**  
Chan **110**

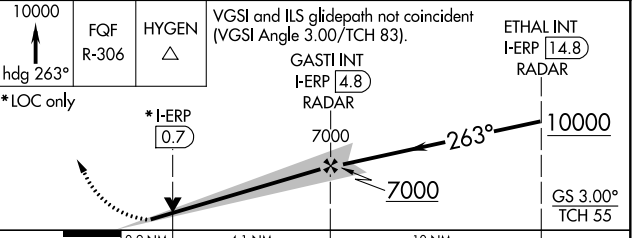
ELEV **5434** TDZE **5355**



HIRL all Rwys  
TDZ/CL Rwys 7, 16L, 16R, 17R, 26, 34L, 34R, 35L, 35R  
FAF to MAP 5 NM

Knots	60	90	120	150	180
Min:Sec	5:00	3:20	2:30	2:00	1:40

## △ 6270 ± RADAR REQUIRED



CATEGORY	A	B	C	D
S-ILS 25 **	5555/24 200 (200-½)			
S-LOC 25	5720/24	365 (300-½)	5720/35	365 (300-⅝)