

LOC/DME I-OUF 111.1 Chan 48	APP CRS 353°	Rwy Idg 12000 TDZE 5354 Apt Elev 5434
---	------------------------	--

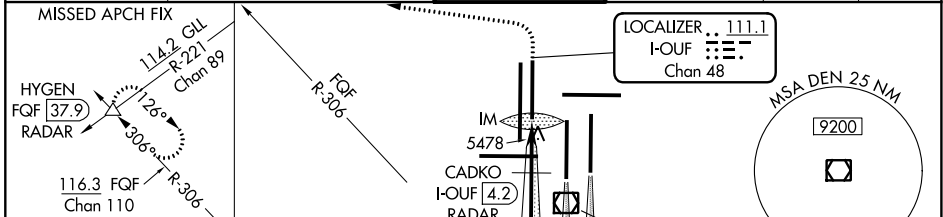
ILS or LOC RWY 34R

DENVER INTL (DEN)

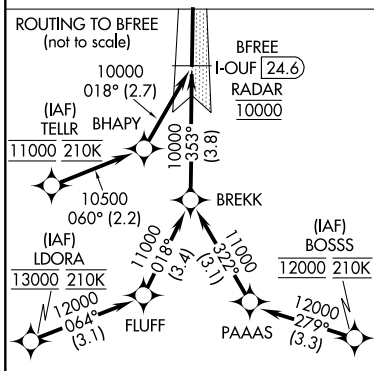
▽ S-LOC 34R DME or RADAR required. Simultaneous approach authorized with Rwy 35L/R. For inoperative ALSF, increase S-LOC Cat C/D visibility to RVR 5500.

ALSF-2 MISSED APPROACH: Climb to 5800 then climbing left turn to 10000 on heading 270° and on FQF VORTAC R-306 to HYGEN/FQF 37.9 DME/RADAR and hold.

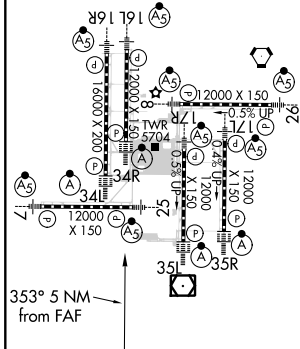
D-ATIS ARR 125.6 379.9 DEP 134.025	DENVER APP CON 119.3 307.3 120.35 379.3 (NORTH) (SOUTH)	DENVER TOWER 135.3 351.95	GND CON 127.5 379.175	CLNC DEL 118.75	CPDLC
--	--	-------------------------------------	---------------------------------	---------------------------	-------



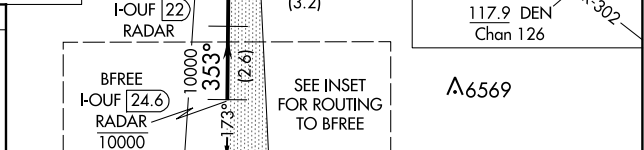
RADAR or GPS REQUIRED



ELEV 5434	D	TDZE 5354
TDZ/CL Rwys 7, 16L, 16R, 17R, 26, 34L, 34R, 35L, 35R		
HIRL all Rwys		



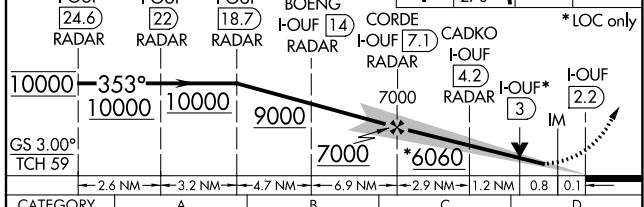
FAF to MAP 5 NM					
Knots	60	90	120	150	180
Min:Sec	5:00	3:20	2:30	2:00	1:40



VGSI and ILS glidepath not coincident (VGSI Angle 3.00/TCH 63).

5800	10000	FQF	HYGEN
↑	hdg 270°	R-306	△

*LOC only



CATEGORY	A	B	C	D
S-ILS 34R	5554/18 200 (200-½)			
S-LOC 34R	5700/24 346 (300-½)		5700/30 346 (300-¾)	

SW-1, 25 FEB 2021 to 25 MAR 2021

SW-1, 25 FEB 2021 to 25 MAR 2021