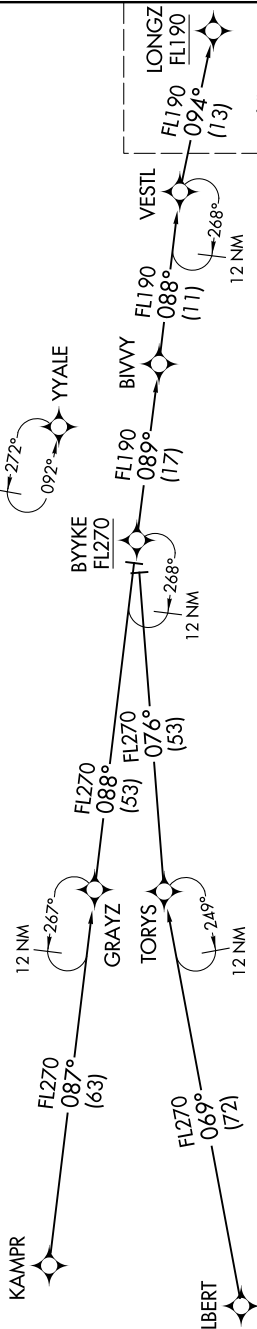


LONGZ ONE ARRIVAL (RNAV) Transition Routes

SW-1, 25 FEB 2021 to 25 MAR 2021

DENVER APP CON
119.3 307.3
D-ATIS ARR
125.6 379.9
DENVER TOWER
128.75 273.55 (Rwy 7-25)
132.35 239.275 (Rwys 8-26, 17L-35R)
133.3 322.45 (Rwy 17R-35L)
135.3 351.95 (Rwys 16L-34R, 16R-34L)



See following page for arrival routes.

- NOTE: RADAR required.
- NOTE: RNAV 1.
- NOTE: DME/DME/IRU or GPS required.
- NOTE: Turbojet aircraft only.
- NOTE: Expect runway assignment on initial contact with Denver TRACON.
- NOTE: BYYKE enroute transition is ATC assigned only.

BYYKE TRANSITION (BYYKE.LONGZ1)
KAMPR TRANSITION (KAMPR.LONGZ1)
LBERT TRANSITION (LBERT.LONGZ1)

(CONTINUED ON FOLLOWING PAGE)

NOTE: Chart not to scale.

SW-1, 25 FEB 2021 to 25 MAR 2021