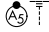


APP CRS 173°	Rwy Idg 16000
	TDZE 5326
	Apt Elev 5434

RNAV (RNP) Z RWY 16R

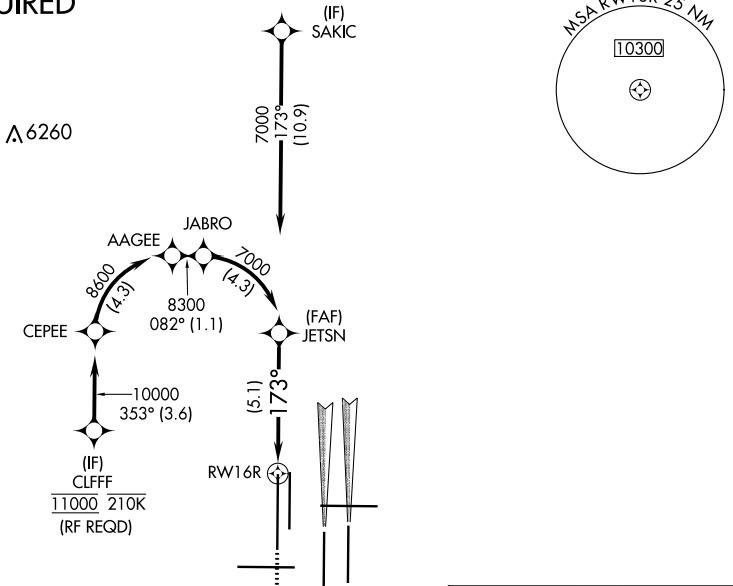
DENVER INTL (DEN)

▽ GPS required. Simultaneous approach authorized. For uncompensated Baro-VNAV systems, procedure NA below -25°C (-13°F) or above 46°C (116°F). Use of FD or AP providing RNAV track guidance required during simultaneous operations.

MALSR

MISSED APPROACH: Climb to 5900 then climbing right turn to 10000 direct BINBE and hold, continue climb-in-hold to 10000.

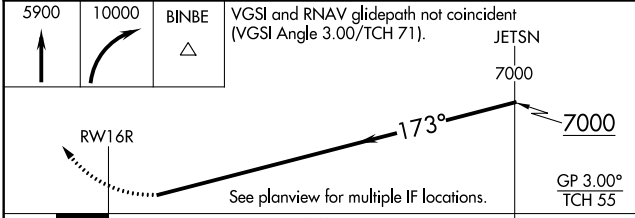
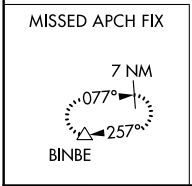
D-ATIS ARR 125.6 379.9 DEP 134.025	DENVER APP CON 119.3 307.3 (NORTH) 120.35 379.3 (SOUTH)	DENVER TOWER 135.3 351.95	GND CON 127.5 379.175	CLNC DEL 118.75	CPDLC
--	---	-------------------------------------	---------------------------------	---------------------------	-------

RADAR REQUIRED

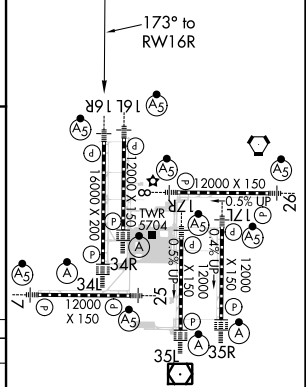


SW-1, 25 FEB 2021 to 25 MAR 2021

SW-1, 25 FEB 2021 to 25 MAR 2021



ELEV 5434	D	TDZE 5326
-----------	----------	-----------



CATEGORY	A	B	C	D
RNP 0.10 DA		5586/50	260 (200-1)	
RNP 0.30 DA		5651/50	325 (300-1)	

AUTHORIZATION REQUIRED

HIRL all Rwys
 TDZ/CL Rwys 7, 16L, 16R, 17R, 26, 34L, 34R, 35L, 35R