

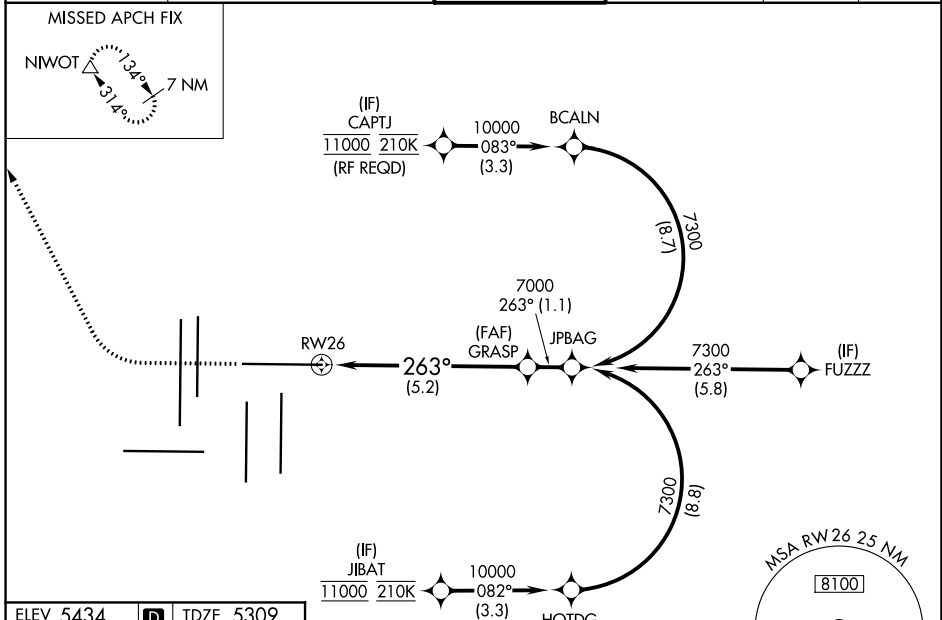
APP CRS <b>263°</b>	Rwy Idg TDZE Apt Elev	<b>12000</b> <b>5309</b> <b>5434</b>
------------------------	-----------------------------	--

# RNAV (RNP) Z RWY 26

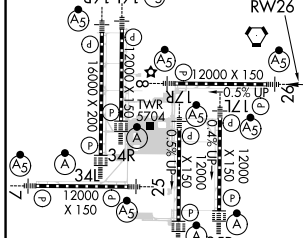
DENVER INTL (DEN)

RNP AR APCH.	MALSR	MISSED APPROACH: Climb to 6000 then climbing right turn to 10000 direct NIWOT and hold.
<p>Simultaneous approach authorized. For uncompensated Baro-VNAV systems, procedure NA below -23°C or above 54°C. For inop ALS, increase RNP 0.15 all Cats visibility to RVR 4000, and increase RNP 0.30 all Cats visibility to RVR 4500.</p>		

D-ATIS ARR <b>125.6 379.9</b> DEP <b>134.025</b>	DENVER APP CON <b>119.3 307.3</b> (NORTH) <b>120.35 379.3</b> (SOUTH)	DENVER TOWER <b>132.35 239.275</b>	GND CON <b>121.85 377.1</b>	CLNC DEL <b>118.75</b>	CPDLC
--	---	---------------------------------------	--------------------------------	---------------------------	-------



ELEV 5434	<b>D</b>	TDZE 5309
-----------	----------	-----------



CATEGORY	A	B	C	D
RNP 0.15 DA		5566/24	257 (200-½)	
RNP 0.30 DA		5611/24	302 (200-½)	

**AUTHORIZATION REQUIRED**

HIRL all Rwys  
TDZ/CL Rwy 7, 16L, 16R, 17R,  
26, 34L, 34R, 35L, 35R

SW-1, 25 FEB 2021 to 25 MAR 2021

SW-1, 25 FEB 2021 to 25 MAR 2021