


RNAV (RNP) Z RWY 34R

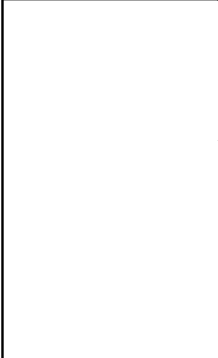
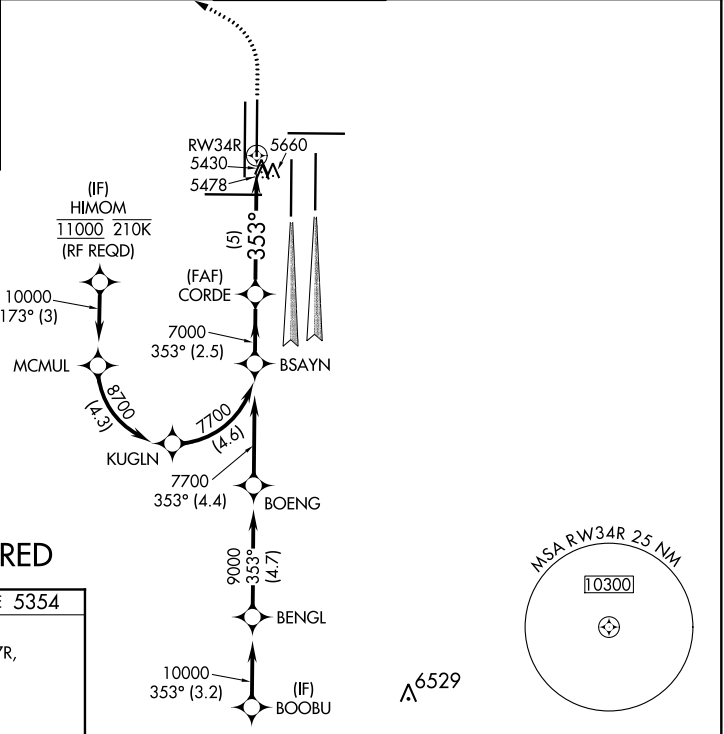
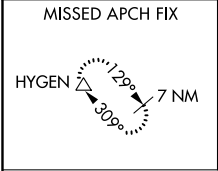
DENVER INTL (DEN)

APP CRS	Rwy Idg	12000
353°	TDZE	5354
	Apt Elev	5434

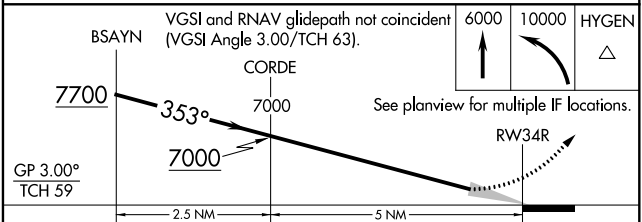
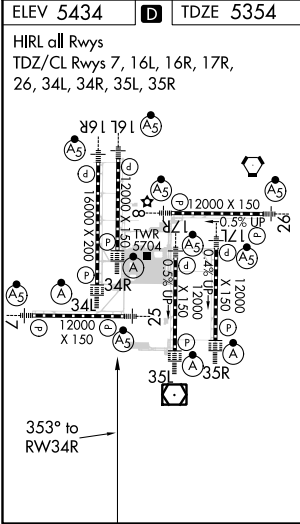
▽ For uncompensated Baro-VNAV systems, procedure NA below -25°C (-13°F) or above 46°C (114°F). GPS required. For inoperative ALSF, increase RNP 0.10 all Cats visibility to RVR 6000 and RNP 0.20 all Cats visibility to 1½ mile and RNP 0.30 all Cats visibility to 2¼ mile. Simultaneous approach authorized. Use of FD or AP providing RNAV track guidance required during simultaneous operations.

ALSF-2

MISSED APPROACH:
 Climb to 6000 then climbing left turn to 10000 direct HYGEN and hold.

D-ATIS	DENVER APP CON		DENVER TOWER	GND CON	CLNC DEL	CPDLC
ARR 125.6 379.9	119.3 307.3	120.35 379.3	135.3 351.95	127.5 379.175	118.75	
DEP 134.025	(NORTH)	(SOUTH)				



RADAR REQUIRED



CATEGORY	A	B	C	D
RNP 0.10 DA	5739/40	385 (400-¾)		
RNP 0.20 DA	5849/60	495 (500-1¼)		
RNP 0.30 DA	5980-1 ½	626 (600-1½)		

AUTHORIZATION REQUIRED

SW-1, 25 FEB 2021 to 25 MAR 2021

SW-1, 25 FEB 2021 to 25 MAR 2021