


APP CRS 353°	Rwy Idg TDZE Apt Elev	12000 5434 5434
------------------------	-----------------------------	--

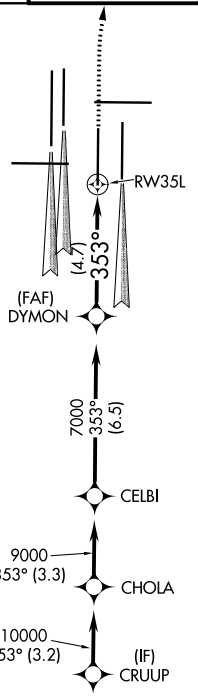
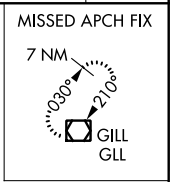
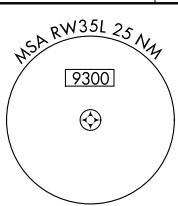
RNAV (RNP) Z RWY 35L

DENVER INTL (DEN)

▽ For uncompensated Baro-VNAV systems, procedure NA below -25°C (-13°F) or above 46°C (111.5°F). GPS required. For inoperative ALSF, increase RNP 0.10 all Cats visibility to RVR 4500 and RNP 0.30 all Cats visibility to RVR 5000. Simultaneous approach authorized. Use of FD or AP providing RNAV track guidance required during simultaneous operations.

ALSF-2  MISSED APPROACH: Climb to 10000, then right turn direct GLL VOR/DME and hold.

D-ATIS ARR 125.6 379.9 DEP 134.025	DENVER APP CON 119.3 307.3 (NORTH) 120.35 379.3 (SOUTH)	DENVER TOWER 133.3 322.45	GND CON 121.85 377.1	CLNC DEL 118.75	CPDLC
--	---	-------------------------------------	--------------------------------	---------------------------	-------

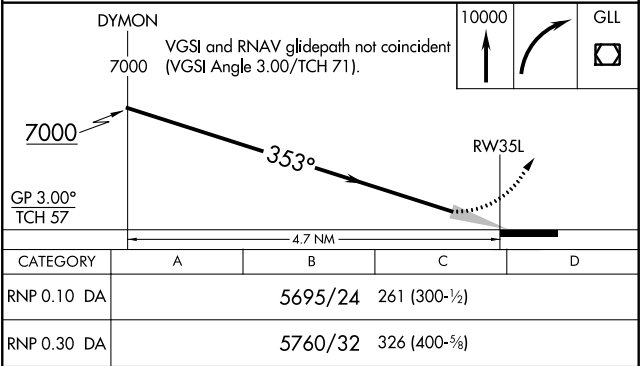


RADAR REQUIRED

ELEV 5434	D	TDZE 5434
-----------	----------	-----------

HIRL all Rwys
TDZ/CL Rwys 7, 16L, 16R, 17R, 26, 34L, 34R, 35L, 35R

353° to RW35L



AUTHORIZATION REQUIRED

SW-1, 25 FEB 2021 to 25 MAR 2021

SW-1, 25 FEB 2021 to 25 MAR 2021