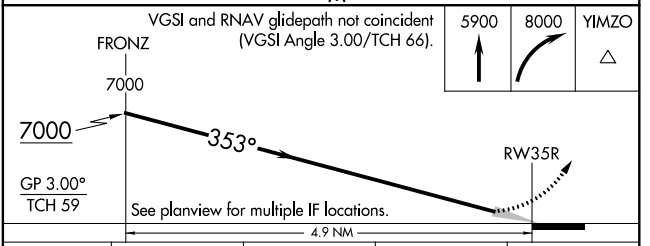
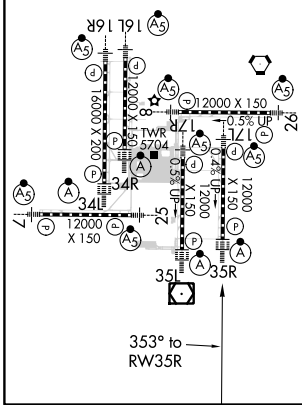
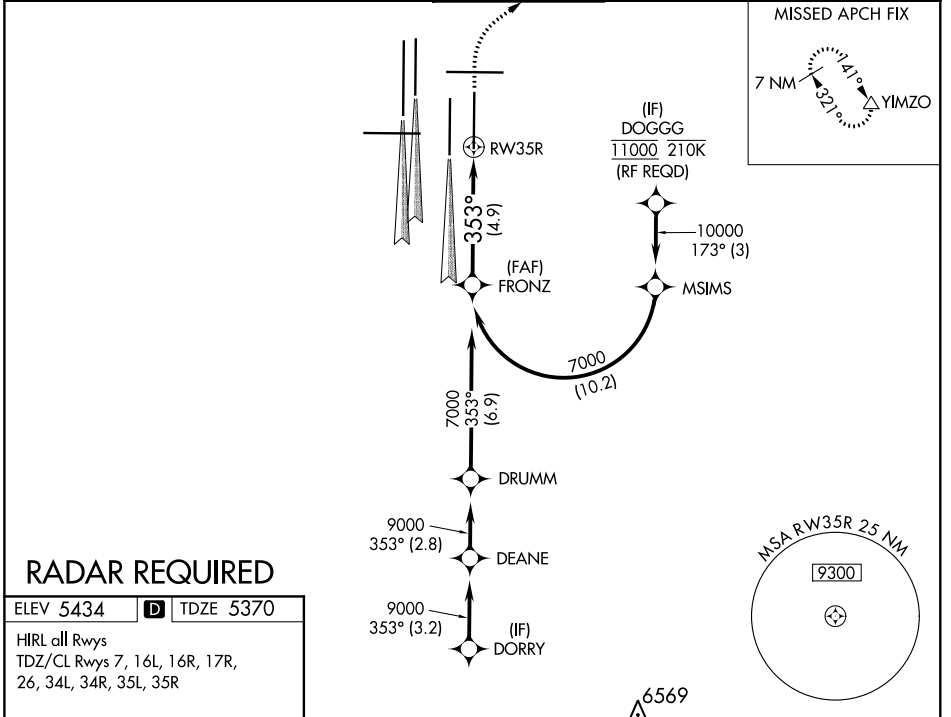


APP CRS 353°	Rwy Idg 12000 TDZE 5370 Apt Elev 5434
------------------------	--

RNAV (RNP) Z RWY 35R

DENVER INTL (DEN)

<p>▽ For uncompensated Baro-VNAV systems, procedure NA below -25°C (-13°F) or above 45°C (114°F). GPS required. For inoperative ALSF, increase RNP 0.10 all Cats visibility to RVR 4500 and RNP 0.30 all Cats visibility to RVR 5000. Simultaneous approach authorized. Use of FD or AP providing RNAV track guidance required during simultaneous operations.</p>		<p>ALSF-2</p>	<p>MISSED APPROACH: Climb to 5900, then climbing right turn to 8000 direct YIMZO and hold.</p>		
D-ATIS ARR 125.6 379.9 DEP 134.025	DENVER APP CON 119.3 307.3 120.35 379.3 (NORTH) (SOUTH)	DENVER TOWER 132.35 239.275	GND CON 121.85 377.1	CLNC DEL 118.75	CPDLC



CATEGORY	A	B	C	D
RNP 0.10 DA	5631/24 261 (200-1/2)			
RNP 0.30 DA	5702/32 332 (300-5/6)			

AUTHORIZATION REQUIRED

SW-1, 25 FEB 2021 to 25 MAR 2021

SW-1, 25 FEB 2021 to 25 MAR 2021