

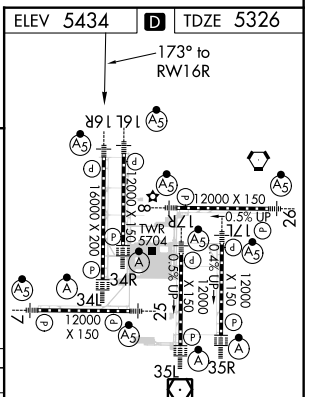
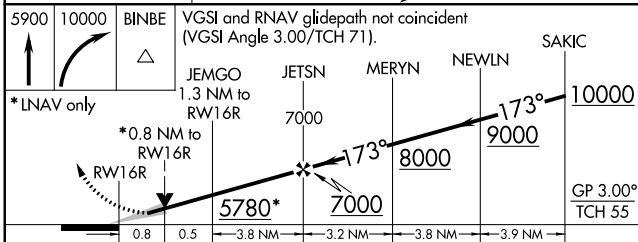
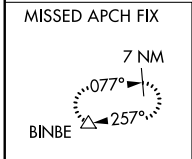
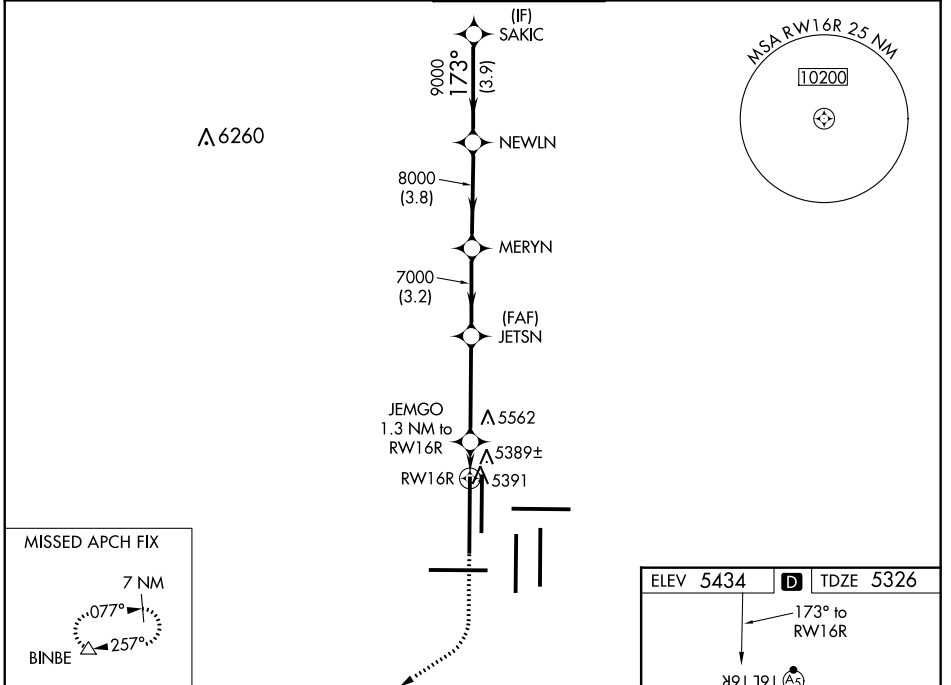
WAAS CH 82628 W16B	APP CRS 173°	Rwy Idg 16000 TDZE 5326 Apt Elev 5434
--	------------------------	--

RNAV (GPS) Y RWY 16R

DENVER INTL (DEN)

RNP APCH.	MALSR 	MISSED APPROACH: Climb to 5900 then climbing right turn to 10000 direct BINBE and hold, continue climb-in-hold to 10000.
RADAR required. ▼ For uncompensated Baro-VNAV systems, LNAV/VNAV NA below -25°C or above 46°C. Simultaneous approach authorized with Rwy 17L/R. LNAV procedure NA during simultaneous operations. For inoperative MALSR, increase LNAV/VNAV all Cats visibility to RVR 4500, LNAV Cat C/D visibility to RVR 4500. Use of FD or AP providing RNAV track guidance required during simultaneous operations.		

D-ATIS ARR 125.6 379.9 DEP 134.025	DENVER APP CON 119.3 307.3 (NORTH) 120.35 379.3 (SOUTH)	DENVER TOWER 135.3 351.95	GND CON 127.5 379.175	CLNC DEL 118.75	CPDLC
--	---	-------------------------------------	---------------------------------	---------------------------	-------



CATEGORY	A	B	C	D
LPV DA		5526/18	200 (100-1/2)	
LNAV/VNAV DA		5589/24	263 (200-1/2)	
LNAV MDA	5660/24	334 (300-1/2)	5660/26	334 (300-1/2)

HIRL all Rwys
TDZ/CL Rwys 7, 16L, 16R, 17R, 26, 34L, 34R, 35L, 35R

SW-1, 25 FEB 2021 to 25 MAR 2021

SW-1, 25 FEB 2021 to 25 MAR 2021