

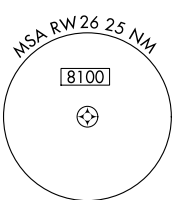
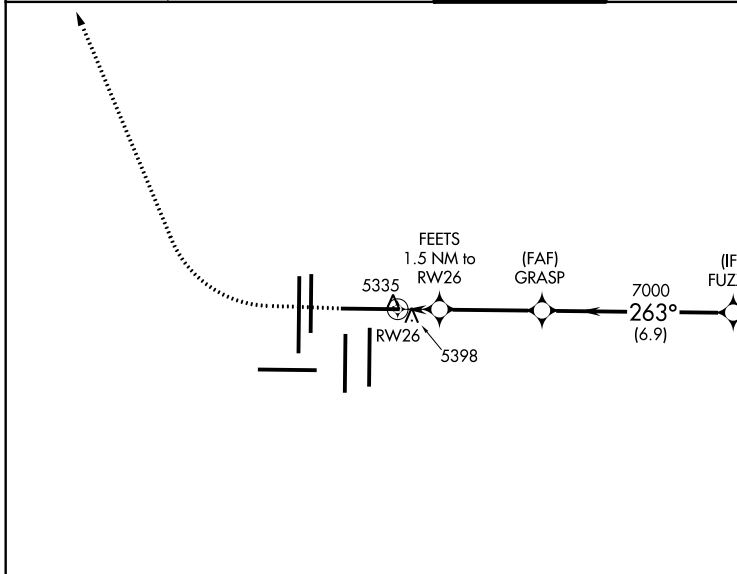
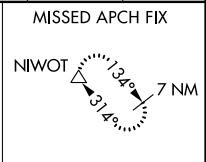
WAAS CH <b>58128</b> <b>W26A</b>	APP CRS <b>263°</b>	Rwy Idg <b>12000</b> TDZE <b>5309</b> Apt Elev <b>5434</b>
--	------------------------	--

# RNAV (GPS) Y RWY 26

DENVER INTL (DEN)

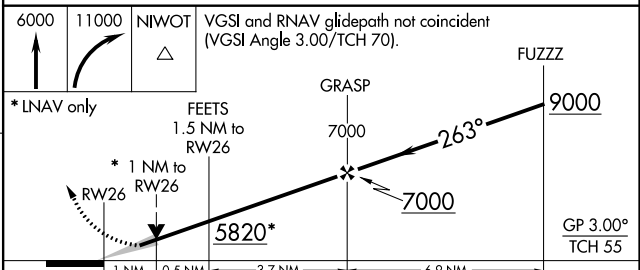
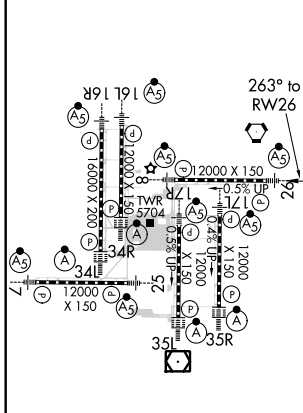
RNP APCH. RADAR required.	MALSR 	MISSED APPROACH: Climb to 6000 then climbing right turn to 11000 direct NIWOT and hold.
<p>▼ For uncompensated Baro-VNAV systems, LNAV/VNAV NA below -25°C or above 46°C. Simultaneous approach authorized with Rwy 25. For inoperative ALS, increase LNAV/VNAV all Cats visibility to RVR 4000 and LNAV Cat C/D visibility to RVR 5500. LNAV procedure NA during simultaneous operations. Use of FD or AP providing RNAV track guidance required during simultaneous operations.</p>		

D-ATIS ARR <b>125.6 379.9</b> DEP <b>134.025</b>	DENVER APP CON <b>119.3 307.3</b> (NORTH) (SOUTH)	DENVER TOWER <b>132.35 239.275</b>	GND CON <b>121.85 377.1</b>	CLNC DEL <b>118.75</b>	CPDLC
--	---	---------------------------------------	--------------------------------	---------------------------	-------



ELEV 5434	<b>D</b>	TDZE 5309
-----------	----------	-----------

△ 6147



CATEGORY	A	B	C	D
LPV DA		5509/18	200 (100-1/2)	
LNAV/VNAV DA		5559/24	250 (200-1/2)	
LNAV MDA	5660/24	351 (300-1/2)	5660/30	351 (300-5/8)

HIRL all Rwys  
TDZ/CL Rwys 7, 16L, 16R, 17R,  
26, 34L, 34R, 35L, 35R

SW-1, 25 FEB 2021 to 25 MAR 2021

SW-1, 25 FEB 2021 to 25 MAR 2021