

WAAS CH 90318 W34B	APP CRS 353°	Rwy Idg 12000 TDZE 5354 Apt Elev 5434
--	------------------------	--

RNAV (GPS) Y RWY 34R

DENVER INTL (DEN)

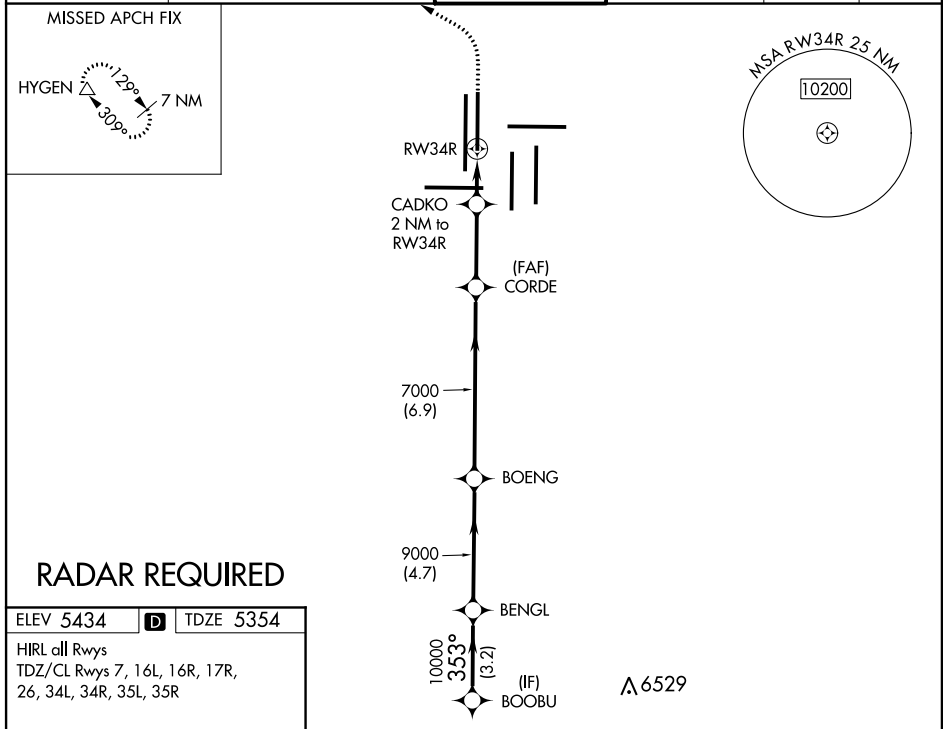
⚠ For uncompensated Baro-VNAV systems, LNAV/VNAV NA below -25°C (-13°F) or above 46°C (114°F). DME/DME RNP-0.3 NA. LNAV procedure NA during simultaneous operations. Simultaneous approach authorized with Rwy 35L/R. Use of FD or AP providing RNAV track guidance required during simultaneous operations.

ALSF-2



MISSED APPROACH: Climb to 6000 then climbing left turn to 10000 direct HYGEM and hold.

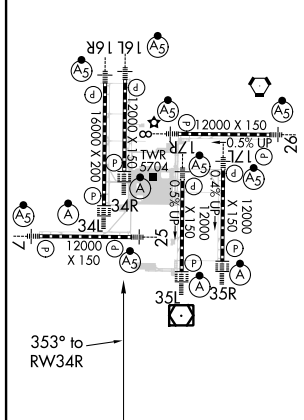
D-ATIS ARR 125.6 379.9 DEP 134.025	DENVER APP CON 119.3 307.3 (NORTH)	120.35 379.3 (SOUTH)	DENVER TOWER 135.3 351.95	GND CON 127.5 379.175	CLNC DEL 118.75	CPDLC
--	---	--------------------------------	-------------------------------------	---------------------------------	---------------------------	-------



RADAR REQUIRED

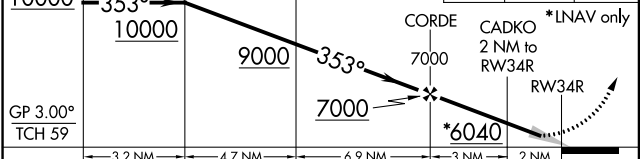
ELEV 5434	D	TDZE 5354
-----------	----------	-----------

HIRL all Rwy's
TDZ/CL Rwy's 7, 16L, 16R, 17R,
26, 34L, 34R, 35L, 35R



VGSI and RNAV glidepath not coincident (VGSI Angle 3.00/TCH 63).

6000	10000	HYGEM
↑	↙	△



CATEGORY	A	B	C	D
LPV DA		5554/18	200 (200-½)	
LNAV/VNAV DA		5838/60	484 (500-1¼)	
LNAV MDA	5940/24	586 (600-½)	5940-1¼	586 (600-1¼)