


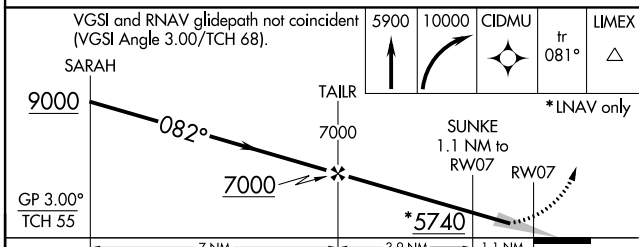
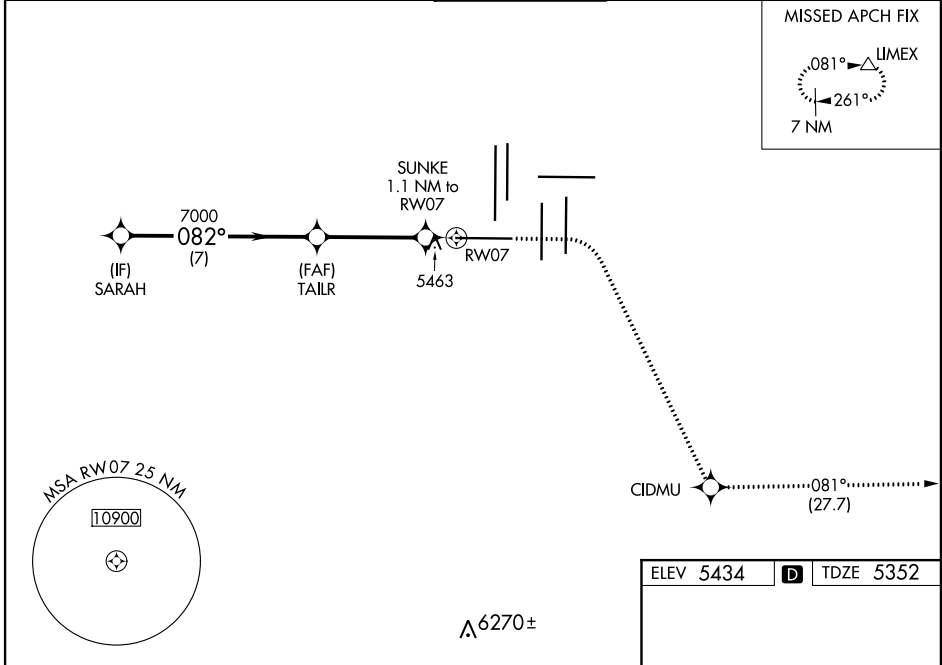
WAAS CH <b>87128</b> <b>W07A</b>	APP CRS <b>082°</b>	Rwy Idg <b>12000</b> TDZE <b>5352</b> Apt Elev <b>5434</b>
--	------------------------	--

# RNAV (GPS) Y RWY 7

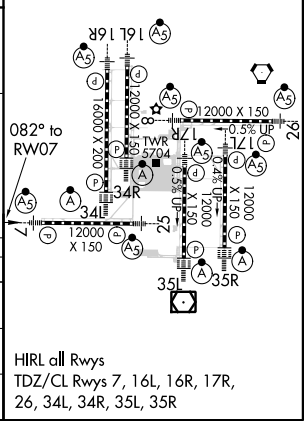
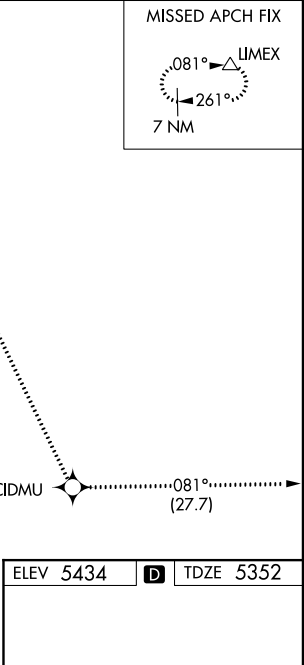
DENVER INTL (DEN)

RNP APCH. RADAR required.	MALSR		MISSED APPROACH: Climb to 5900 then climbing right turn to 10000 direct CIDMU and on track 081° to LIMEX and hold.
▼ For uncompensated Baro-VNAV systems, LNAV/VNAV NA below -25°C or above 46°C. Simultaneous approach authorized with Rwy 8. LNAV procedure NA during simultaneous operations. Use of FD or AP providing RNAV track guidance required during simultaneous operations. For inop ALS, increase LNAV/VNAV all Cats visibility to RVR 4500 and LNAV Cat C/D visibility to RVR 5500.			

D-ATIS ARR <b>125.6 379.9</b> DEP <b>134.025</b>	DENVER APP CON <b>119.3 307.3</b> (NORTH) <b>120.35 379.3</b> (SOUTH)	DENVER TOWER <b>128.75 273.55</b>	GND CON <b>127.5 379.175</b>	CLNC DEL <b>118.75</b>	CPDLC
--	---	--------------------------------------	---------------------------------	---------------------------	-------



CATEGORY	A	B	C	D
LPV DA		5552/18	200 (200-½)	
LNAV/VNAV DA		5626/24	274 (200-½)	
LNAV MDA	5720/24	368 (300-½)	5720/26	368 (300-½)



SW-1, 25 FEB 2021 to 25 MAR 2021

SW-1, 25 FEB 2021 to 25 MAR 2021