

WAAS CH 82228 W08A	APP CRS 082°	Rwy Idg 12000 TDZE 5354 Apt Elev 5434
--	------------------------	--

RNAV (GPS) Y RWY 8

DENVER INTL (DEN)

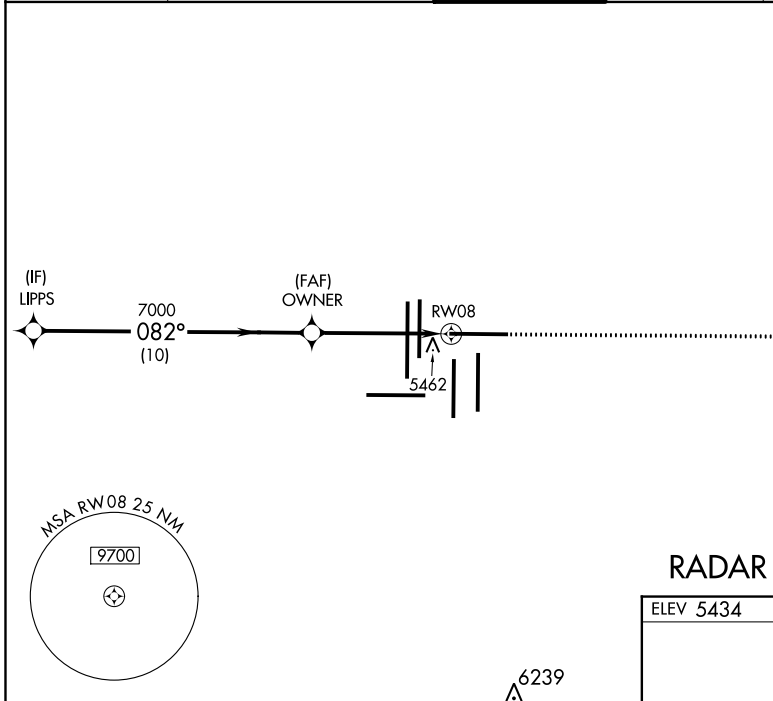
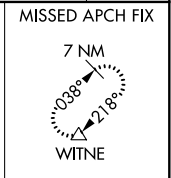
▼ For uncompensated Baro-VNAV systems, LNAV/VNAV NA below -25°C (-13°F) or above 47°C (117°F). Simultaneous approach authorized with Rwy 7. DME/DME RNP-0.3 NA. LNAV procedure NA during simultaneous operations. Use of FD or AP providing RNAV track guidance required during simultaneous operations. For inoperative MALSR, increase LNAV Cat C/D visibility to RVR 5500. # RVR 1800 authorized with use of FD or AP or HUD to DA.

MALSR



MISSED APPROACH: Climb to 10000 direct KVERN and on track 041° to WITNE and hold.

D-ATIS ARR 125.6 379.9 DEP 134.025	DENVER APP CON 119.3 307.3 (NORTH) 120.35 379.3 (SOUTH)	DENVER TOWER 132.35 239.275	GND CON 121.85 377.1	CLNC DEL 118.75	CPDLC
--	---	---------------------------------------	--------------------------------	---------------------------	-------

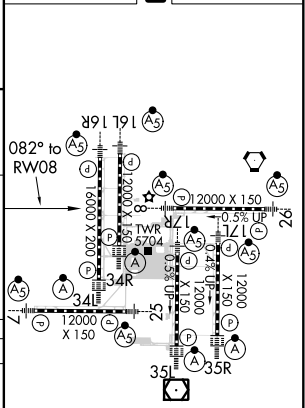
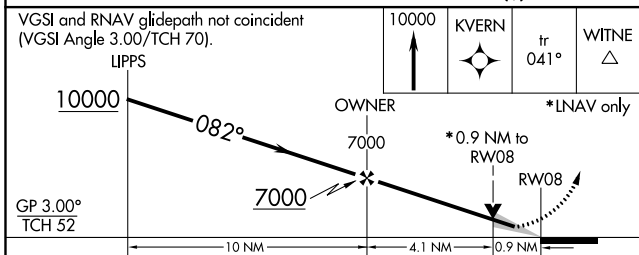


SW-1, 25 FEB 2021 to 25 MAR 2021

SW-1, 25 FEB 2021 to 25 MAR 2021

RADAR REQUIRED

ELEV 5434	<input checked="" type="checkbox"/> TDZE 5354
-----------	---



GP 3.00° TCH 52	10 NM	4.1 NM	0.9 NM
CATEGORY	A	B	C
LPV DA #	5554/24		200 (200-½)
LNAV/VNAV DA	5833/60		479 (400-1¼)
LNAV MDA	5720/24	366 (300-½)	5720/35 366 (300-⅝)

HIRL all Rwws
TDZ/CL Rwws 7, 16L, 16R, 17R, 26, 34L, 34R, 35L, 35R