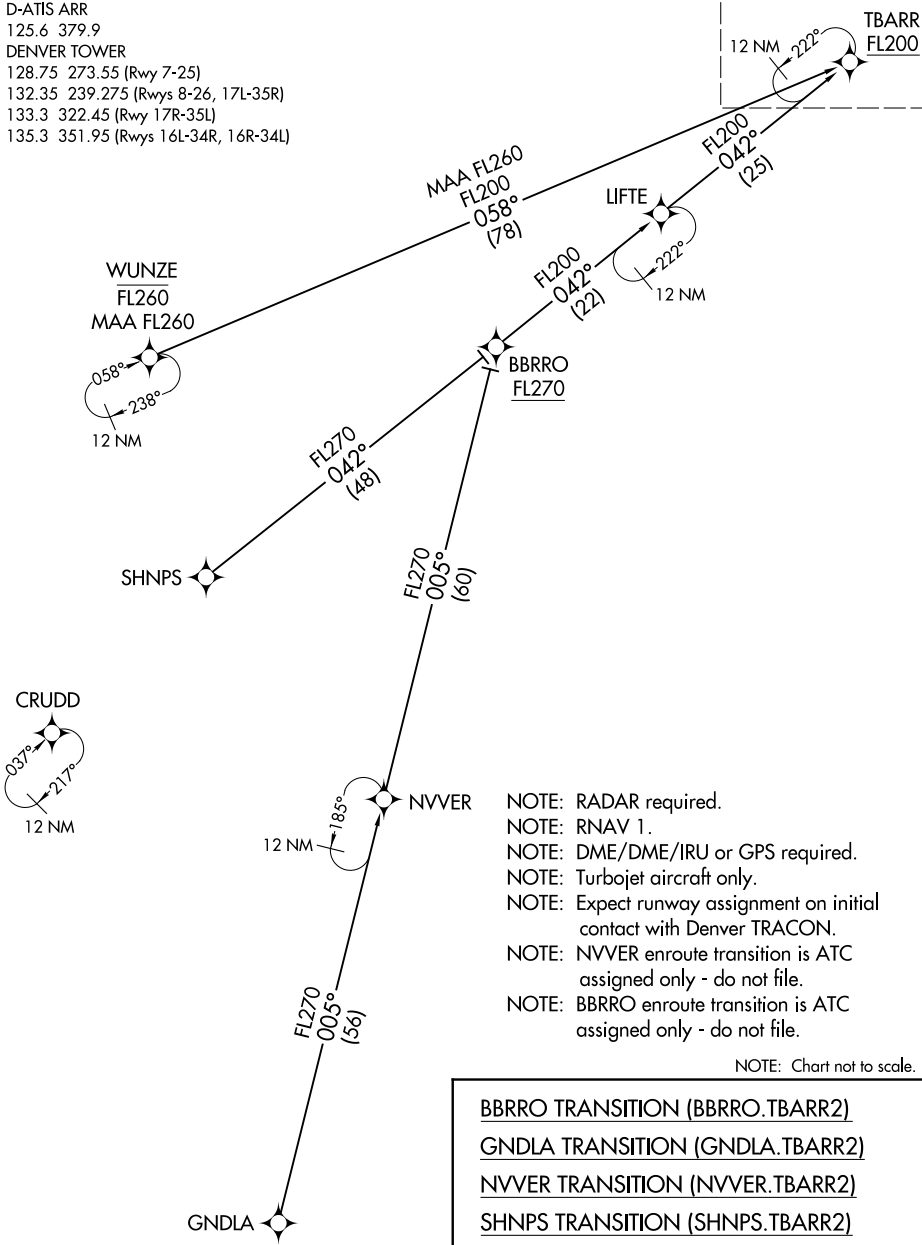


TBARR TWO ARRIVAL (RNAV) Transition Routes

DENVER APP CON
 120.35 379.3
 D-ATIS ARR
 125.6 379.9
 DENVER TOWER
 128.75 273.55 (Rwys 7-25)
 132.35 239.275 (Rwys 8-26, 17L-35R)
 133.3 322.45 (Rwy 17R-35L)
 135.3 351.95 (Rwys 16L-34R, 16R-34L)

See following page for arrival routes.



- NOTE: RADAR required.
- NOTE: RNAV 1.
- NOTE: DME/DME/IRU or GPS required.
- NOTE: Turbojet aircraft only.
- NOTE: Expect runway assignment on initial contact with Denver TRACON.
- NOTE: NVVER enroute transition is ATC assigned only - do not file.
- NOTE: BBRRO enroute transition is ATC assigned only - do not file.

NOTE: Chart not to scale.

- BBRRO TRANSITION (BBRRO.TBARR2)
- GNDLA TRANSITION (GNDLA.TBARR2)
- NVVER TRANSITION (NVVER.TBARR2)
- SHNPS TRANSITION (SHNPS.TBARR2)
- WUNZE TRANSITION (WUNZE.TBARR2)

(CONTINUED ON FOLLOWING PAGE)

SW-1, 25 FEB 2021 to 25 MAR 2021

SW-1, 25 FEB 2021 to 25 MAR 2021