

APP CRS	Rwy Idg	5001
079°	TDZE	355
	Apt Elev	355

RNAV (GPS) RWY 8

J LYNN HELMS SEVIER COUNTY (DEQ)

RNP APCH.

⚠ If local altimeter setting not received, use Texarkana altimeter setting and increase all MDAs 100 feet.
⚠ Rwy 8 helicopter visibility reduction below 3/4 SM NA.

MISSED APPROACH: Climbing right turn to 2500 direct ZEBOB and hold.

ASOS
134.075

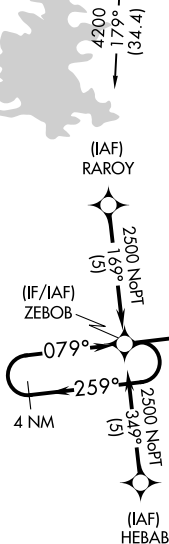
FORT WORTH CENTER
123.925 269.475

UNICOM
122.8 (CTAF) 0

1620 **⚠**

RICH MOUNTAIN
PGO

Procedure NA for arrival at PGO VORTAC on airway radials 155 CW 208.



⚠1093

⚠706

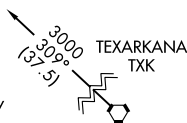
⚠886

⚠998

MSA RW08 25 NM

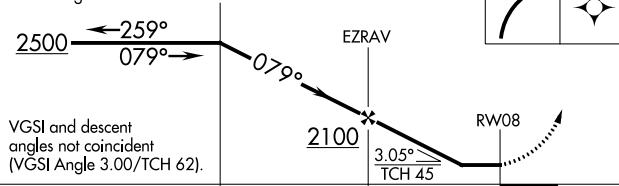
3600

Procedure NA for arrival at TXK VORTAC on airway radials 265 CW 348.



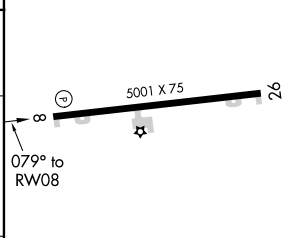
ELEV 355	TDZE 355
----------	----------

4 NM Holding Pattern ZEBOB



VGSI and descent angles not coincident (VGSI Angle 3.00/TCH 62).

CATEGORY	A	B	C	D
RNAV MDA	780-1	425 (500-1)		NA
CIRCLING	900-1	545 (600-1)		NA



REIL Rwy 8 and 26 **0**
MIRL Rwy 8-26 **0**

SC-1, 25 FEB 2021 to 25 MAR 2021

SC-1, 25 FEB 2021 to 25 MAR 2021