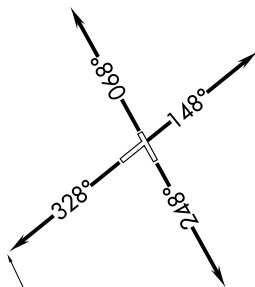


EC-1, 25 FEB 2021 to 25 MAR 2021

**TOP ALTITUDE:  
ASSIGNED BY ATC**

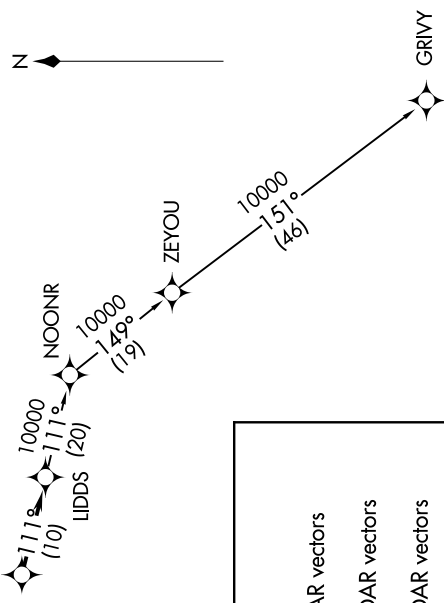
1800



**TAKEOFF MINIMUMS:**  
 Rwys 7, 15, 33: Standard.  
 Rwy 25: Standard with minimum climb  
 of 210' per NM to 1000.

**KZLOV**  
 15000  
 4000

**ATIS**  
 124.875  
**GND CON**  
 121.85  
**DETROIT CITY TOWER**  
 121.3 257.8  
**DETROIT DEP CON**  
 134.3 284.0



**NOTE:** RNAV 1.  
**NOTE:** RADAR required.  
**NOTE:** DME/DME/IRU or GPS required.  
**NOTE:** Turbojet departures at/above 10000,  
 maintain 280K until advised by ATC.

**DEPARTURE ROUTE DESCRIPTION**

**TAKEOFF RUNWAY 7:** Climb on heading 068° or as assigned for RADAR vectors to cross KZLOV between 4000 and 15000, thence....  
**TAKEOFF RUNWAY 15:** Climb on heading 148° or as assigned for RADAR vectors to cross KZLOV between 4000 and 15000, thence....  
**TAKEOFF RUNWAY 25:** Climb on heading 248° or as assigned for RADAR vectors to cross KZLOV between 4000 and 15000, thence....  
**TAKEOFF RUNWAY 33:** Climb on heading 328° or as assigned for RADAR vectors to cross KZLOV between 4000 and 15000, thence....

....on track 111° to LIDDS, then on (transition). Maintain ATC assigned altitude, expect filed altitude 10 minutes after departure.

**GRIVY TRANSITION (LIDDS2.GRIVY):**

**NOTE:** Chart not to scale.

EC-1, 25 FEB 2021 to 25 MAR 2021