

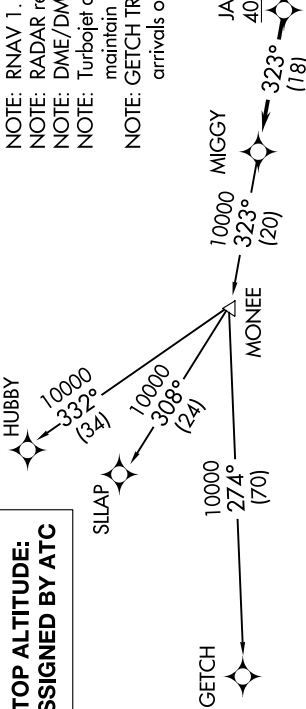
MIGGY TWO DEPARTURE (RNAV)

AL-118 (FAA)

DETROIT, MICHIGAN

EC-1, 25 FEB 2021 to 25 MAR 2021

**TOP ALTITUDE:
ASSIGNED BY ATC**



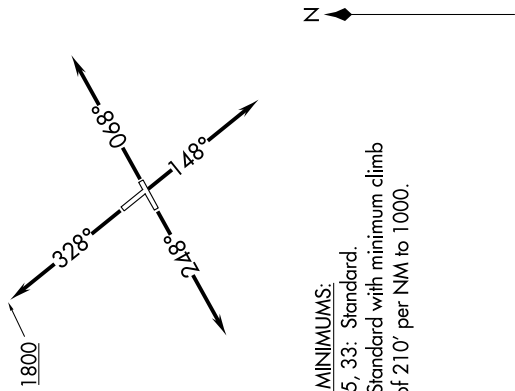
- NOTE: RNAV 1.
- NOTE: RADAR required.
- NOTE: DME/DME/IRU or GPS required.
- NOTE: Turbojet departures at/above 10000, maintain 280K until advised by ATC.
- NOTE: GETCH TRANSITION: For use by KMKKE area arrivals only, or as assigned by ATC.

ATIS 124.875
 GND CON 121.85
 DETROIT CITY TOWER 121.3 257.8
 DETROIT DEP CON 134.3 284.0

DEPARTURE ROUTE DESCRIPTION

- TAKEOFF RUNWAY 7:** Climb on heading 068° or as assigned for RADAR vectors to cross JAXII at or above 4000, thence...
- TAKEOFF RUNWAY 15:** Climb on heading 148° or as assigned for RADAR vectors to cross JAXII at or above 4000, thence...
- TAKEOFF RUNWAY 25:** Climb on heading 248° or as assigned for RADAR vectors to cross JAXII at or above 4000, thence...
- TAKEOFF RUNWAY 33:** Climb on heading 328° to 1800 then as assigned for RADAR vectors to cross JAXII at or above 4000, thence...
-on track 323° to MIGGY, then on (transition). Maintain ATC assigned altitude, expect filed altitude 10 minutes after departure.

GETCH TRANSITION (MIGGY2.GETCH):
HUBBY TRANSITION (MIGGY2.HUBBY):
SLLAP TRANSITION (MIGGY2.SLLAP):



TAKEOFF MINIMUMS:
 Rwy 7, 15, 33: Standard.
 Rwy 25: Standard with minimum climb of 210' per NM to 1000.

NOTE: Chart not to scale.

EC-1, 25 FEB 2021 to 25 MAR 2021