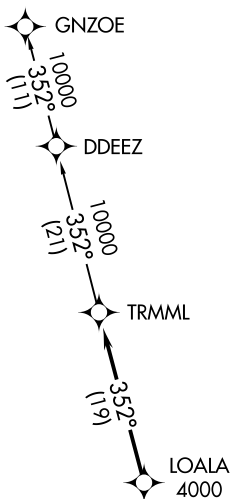


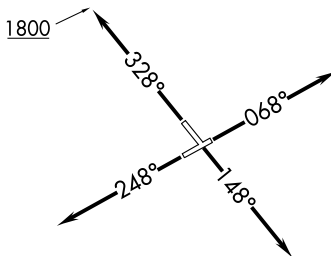
**TOP ALTITUDE:
ASSIGNED BY ATC**



ATIS
124.875
GND CON
121.85
DETROIT CITY TOWER
121.3 257.8
DETROIT DEP CON
134.3 284.0

TAKEOFF MINIMUMS:
Rwys 7, 15, 33: Standard.
Rwy 25: Standard with minimum climb
of 210' per NM to 1000.

- NOTE: RNAV 1.
- NOTE: RADAR required.
- NOTE: DME/DME/IRU or GPS required.
- NOTE: Turbojet departures at/above 10000,
maintain 280K until advised by ATC.



NOTE: Chart not to scale.

DEPARTURE ROUTE DESCRIPTION

- TAKEOFF RUNWAY 7: Climb on heading 068° or as assigned for RADAR vectors to cross LOALA at or above 4000, thence....
- TAKEOFF RUNWAY 15: Climb on heading 148° or as assigned for RADAR vectors to cross LOALA at or above 4000, thence....
- TAKEOFF RUNWAY 25: Climb on heading 248° or as assigned for RADAR vectors to cross LOALA at or above 4000, thence....
- TAKEOFF RUNWAY 33: Climb on heading 328° to 1800 then as assigned for RADAR vectors to cross LOALA at or above 4000, thence....

....on track 352° to TRMML, then on (transition). Maintain ATC assigned altitude, expect filed altitude 10 minutes after departure.

GNZOE TRANSITION (TRMML3.GNZOE):