

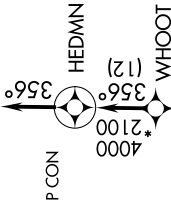
BEREE ONE ARRIVAL (RNAV)

AL-6039 (FAA)

DALLAS-FORT WORTH, TEXAS

SC-2, 25 FEB 2021 to 25 MAR 2021

D-ATIS ARR
123.775
REGIONAL APP CON
125.025
133.525
263.025

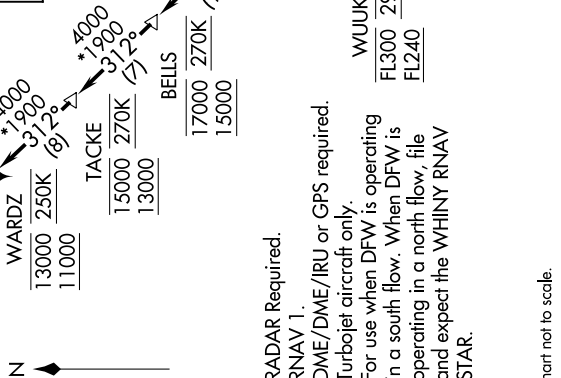


From BEREE on track 312° to cross BELLS between 15000 and 17000 and at 270K, then on track 312° to cross TACKE between 13000 and 15000 and at 270K, then on track on track 312° to cross WARDZ between 11000 and 13000 and at 250K, then on track 312° to cross DIETZ at 11000 and at 220K, then on track 356° to WHOOT, then on track 356° to HEDMN, then on track 356°. Expect RADAR vectors to final approach course.

ARRIVAL ROUTE DESCRIPTION

- CRIED TRANSITION (CRIED.BEREE1):
- OUTLN TRANSITION (OUTLN.BEREE1): (ATC assigned only.)
- PNUTS TRANSITION (PNUTS.BEREE1):
- POPSY TRANSITION (POPSY.BEREE1): (ATC assigned only.)
- POWND TRANSITION (POWND.BEREE1): (ATC assigned only.)
- STUFT TRANSITION (STUFT.BEREE1):
- YUYUN TRANSITION (YUYUN.BEREE1):

N



- NOTE: RADAR Required.
- NOTE: RNAV 1.
- NOTE: DME/DME/IRU or GPS required.
- NOTE: Turbojet aircraft only.
- NOTE: For use when DFW is operating in a south flow. When DFW is operating in a north flow, file and expect the WHINY RNAV STAR.

NOTE: Chart not to scale.

SC-2, 25 FEB 2021 to 25 MAR 2021

BEREE ONE ARRIVAL (RNAV)

(BEREE.BEREE1) 26MAY16

DALLAS-FORT WORTH, TEXAS

DALLAS-FORT WORTH INTL (DFW)