

# BRDJE THREE ARRIVAL (RNAV) Transition Routes

D-ATIS ARR  
123.775  
REGIONAL APP CON  
125.025 263.025

- NOTE: RADAR required.
- NOTE: RNAV 1.
- NOTE: DME/DME/IRU or GPS required.
- NOTE: Turbojet aircraft only.
- NOTE: For use when DFW is operating in a north flow.  
When DFW is in south flow, expect and file the SEEVR RNAV STAR.

AXXEE TRANSITION (AXXEE.BRDJE3):

(for aircraft filing FL230 and below)

CHMLI TRANSITION (CHMLI.BRDJE3):

(ATC assigned only)

FEWWWW TRANSITION (FEWWWW.BRDJE3)

HITUG TRANSITION (HITUG.BRDJE3)

JRHED TRANSITION (JRHED.BRDJE3):

(ATC assigned only)

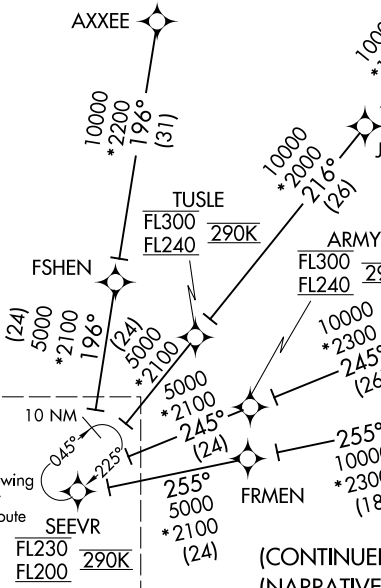
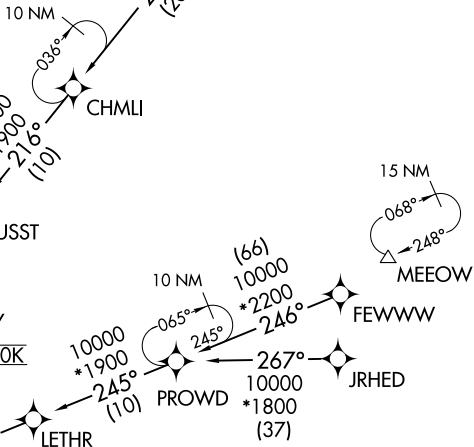
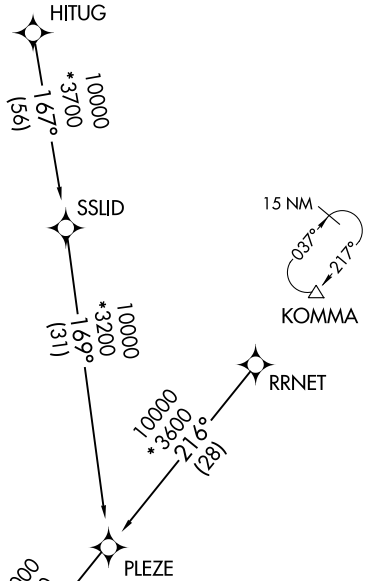
PROWD TRANSITION (PROWD.BRDJE3):

(ATC assigned only)

RRNET TRANSITION (RRNET.BRDJE3)

RRONY TRANSITION (RRONY.BRDJE3):

(for aircraft filing FL230 and below)



See following page for arrival route

(CONTINUED ON FOLLOWING PAGE)  
(NARRATIVE ON FOLLOWING PAGE)

NOTE: Chart not to scale.

SC-2, 25 FEB 2021 to 25 MAR 2021

SC-2, 25 FEB 2021 to 25 MAR 2021

# BRDJE THREE ARRIVAL (RNAV) Transition Routes

(SEEVR.BRDJE3) 31MAR16