

CEDAR CREEK ONE ARRIVAL

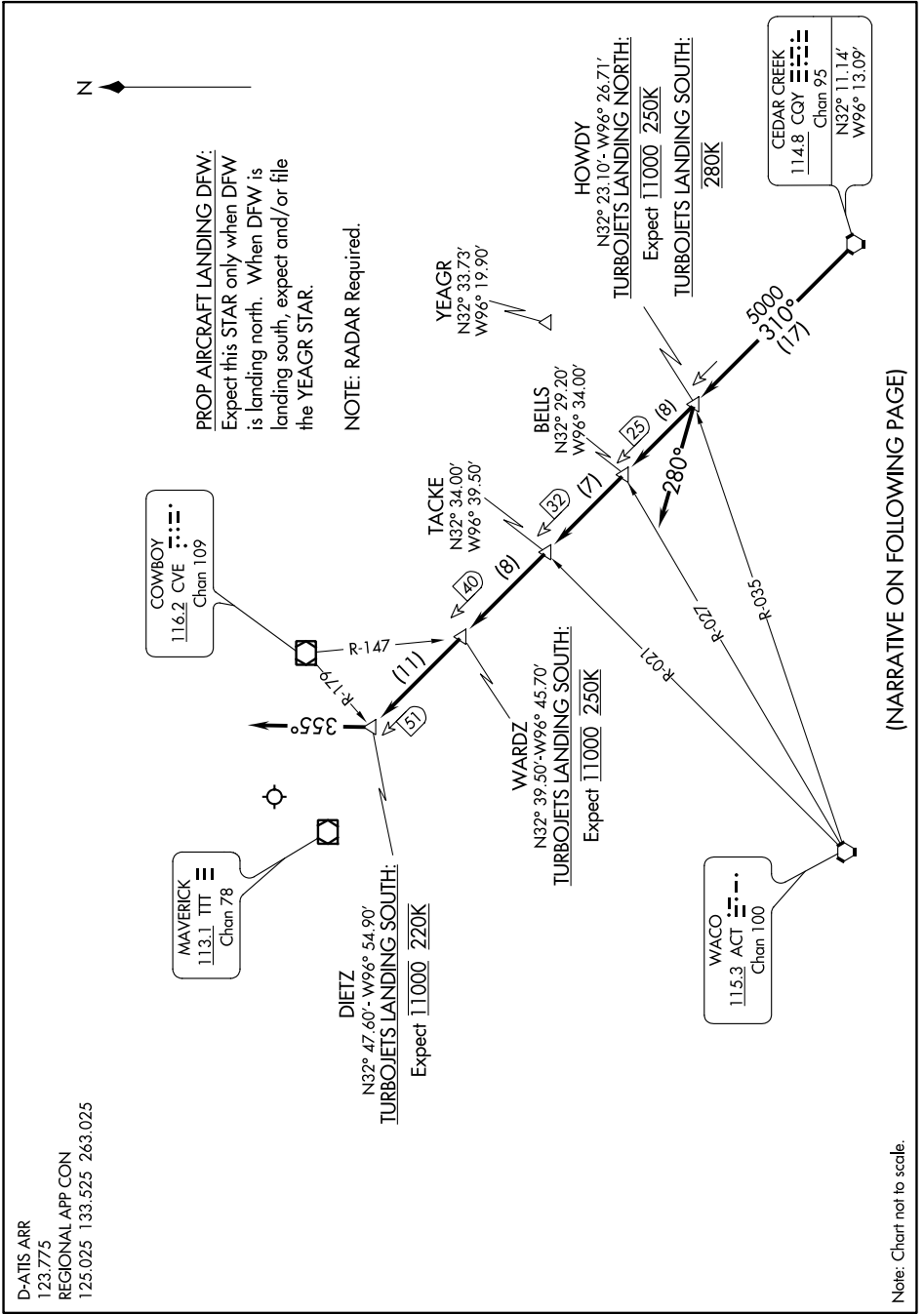
Arrival Routes

SC-2, 25 FEB 2021 to 25 MAR 2021

D-ATIS ARR
123.775
REGIONAL APP CON
125.025 133.525 263.025

CEDAR CREEK ONE ARRIVAL

Arrival Routes



(NARRATIVE ON FOLLOWING PAGE)

SC-2, 25 FEB 2021 to 25 MAR 2021

Note: Chart not to scale.