

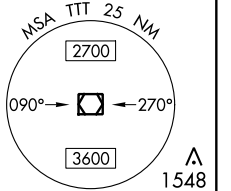
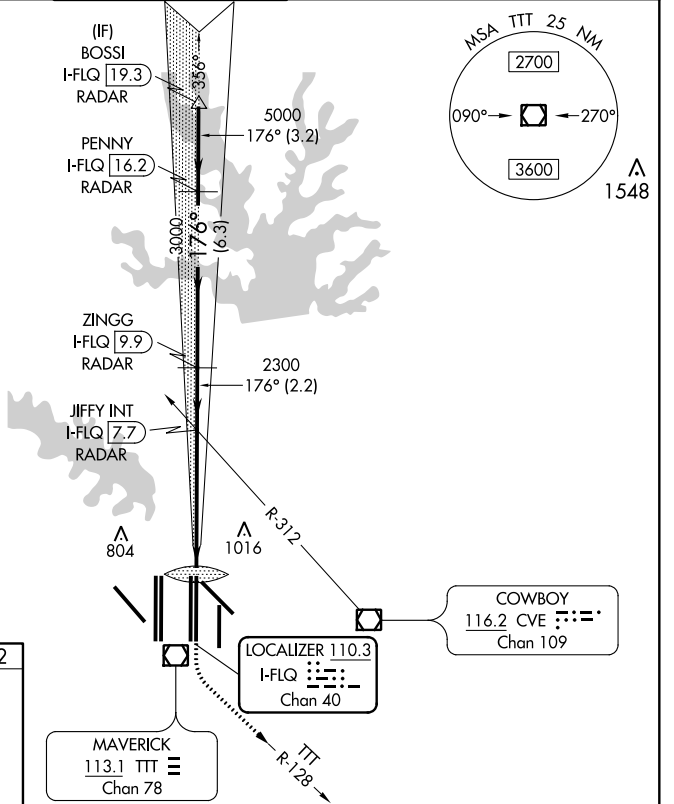
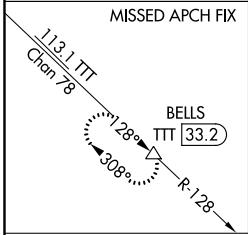
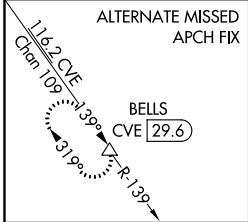
LOC/DME I-FLQ 110.3 Chan 40	APP CRS 176°	Rwy ldg 13400 TDZE 562 Apt Elev 607
---	------------------------	--

CONVERGING ILS RWY 17C

DALLAS-FORT WORTH INTL (DFW)

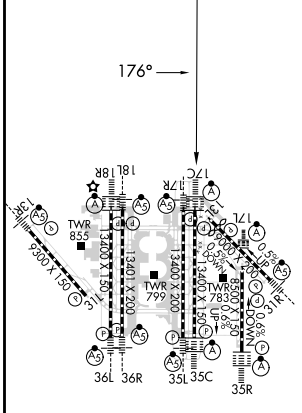
<p>▼ DME or RADAR required. Simultaneous approach authorized with Converging ILS Rwy 13R.</p>		<p>ALSF-2</p>	<p>MISSED APPROACH: Climb to 3000 then climbing left turn to 3000 on TTT VOR/DME R-128 to BELLS/TTT 33.2 DME and hold.</p>	
---	--	---------------	--	--

D-ATIS ARR 123.775 DEP 135.925	REGIONAL APP CON 127.075	DFW TOWER 126.55 127.5 EAST 124.15 134.9 WEST	GND CON 121.65 121.8 EAST 121.85 WEST	CLNC DEL 128.25	CPDLC
--	------------------------------------	---	---	---------------------------	-------



RADAR REQUIRED

ELEV 607	D	TDZE 562
----------	---	----------



HIRL all Rwys
REIL Rws 13L and 31L
TDZ/CL all Rws except 13L and 31L

1300	3000	BELLS	VGS1 and ILS glidepath not coincident (VGS1 Angle 3.00/TCH 74).		BOSSI I-FLQ 19.3
↑	TTT R-128	△	JIFFY INT I-FLQ 7.7	ZINGG I-FLQ 9.9	PENNY I-FLQ 16.2
			RADAR	RADAR	RADAR
IM 654	2300	3000	5000	6000	GS 3.00° TCH 58
0.1	5.2 NM	2.2 NM	6.3 NM	3.2 NM	
CATEGORY	A	B	C	D	
S-ILS 17C	762/18		200 (200-1/2)		

SC-2, 25 FEB 2021 to 25 MAR 2021

SC-2, 25 FEB 2021 to 25 MAR 2021