

LOC/DME I-VYVY 111.9 Chan 56	APP CRS 176°	Rwy Idg 13400 TDZE 607 Apt Elev 607
---	------------------------	--

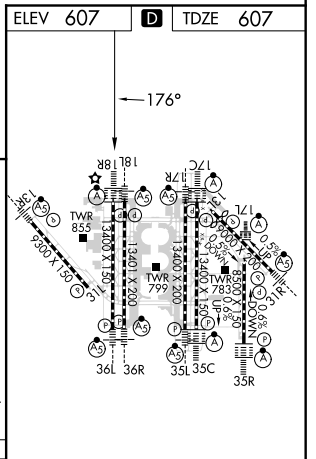
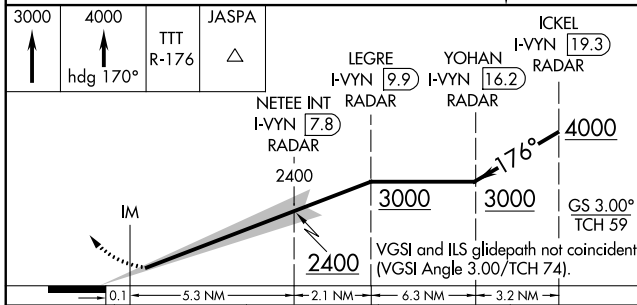
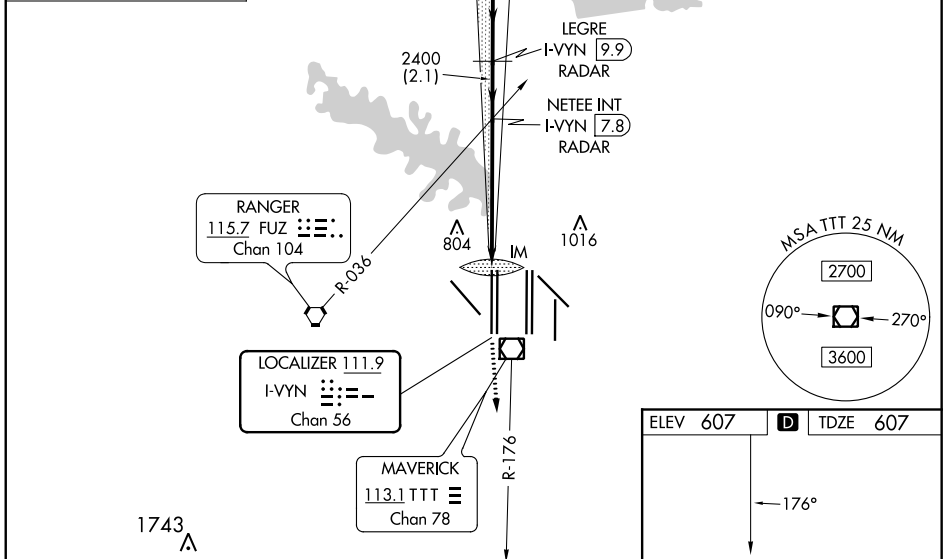
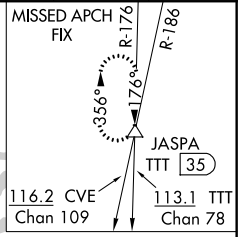
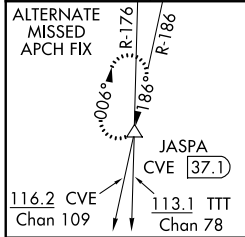
CONVERGING ILS RWY 18R

DALLAS-FORT WORTH INTL (DFW)

DME and RADAR required.

ALS-F-2 MISSED APPROACH: Climb to 3000 then climb to 4000 on heading 170° and TTT VOR/DME R-176 to JASPA/TTT 35 DME and hold.

D-ATIS ARR 123.775 DEP 135.925	REGIONAL APP CON 118.425	DFW TOWER 126.55 127.5 EAST 124.15 134.9 WEST	GND CON 121.65 121.8 EAST 121.85 WEST	CLNC DEL 128.25	CPDLC
--	------------------------------------	---	---	---------------------------	-------



CATEGORY	A	B	C	D	HIRL all Rwys REIL Rwy 13L and 31L TDZ/CL all Rwys except 13L and 31L
S-ILS 18R		807/18	200 (200-1/2)		

CONVERGING ILS RWY 18R

SC-2, 25 FEB 2021 to 25 MAR 2021

SC-2, 25 FEB 2021 to 25 MAR 2021