

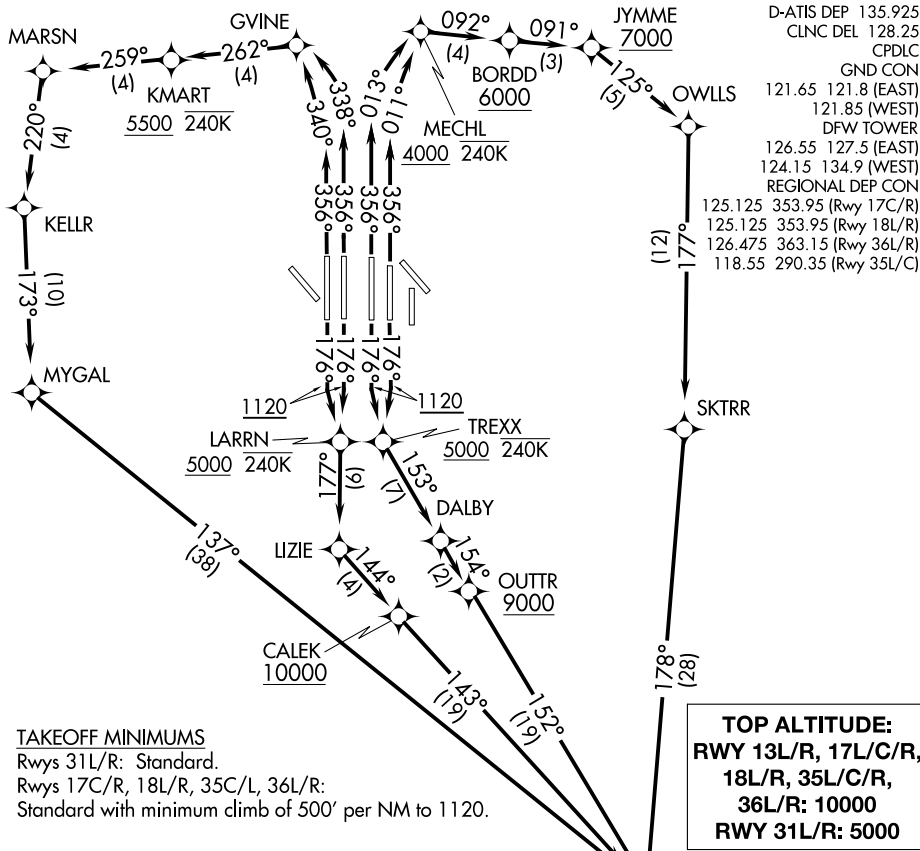
(DARTZ8.DARTZ) 19283

AL-6039 (FAA)

DALLAS-FORT WORTH INTL (DFW)

DARTZ EIGHT DEPARTURE (RNAV)

DALLAS-FORT WORTH, TEXAS



TAKEOFF MINIMUMS

Rwys 31L/R: Standard.
 Rwys 17C/R, 18L/R, 35C/L, 36L/R:
 Standard with minimum climb of 500' per NM to 1120.

TOP ALTITUDE:
RWY 13L/R, 17L/C/R,
18L/R, 35L/C/R,
36L/R: 10000
RWY 31L/R: 5000

NOTE: BILEE TRANSITION: For aircraft overlying BILEE intersection on J87 to overfly TNV VOR/DME.

NOTE: TORNN TRANSITION: For aircraft overlying TORNN intersection, then on the appropriate RNAV STAR to George Bush Intercontinental, Lone Star Executive, or David Wayne Hooks Memorial airports. Also for aircraft landing in the Lafayette, Lake Charles, or Beaumont/Port Arthur terminal areas.

NOTE: DME/DME/IRU or GPS required.

NOTE: RNAV 1.

NOTE: For use by turbo-jets only.

NOTE: RADAR required.

NOTE: Chart not to scale.

(NARRATIVE ON FOLLOWING PAGE)

DARTZ EIGHT DEPARTURE (RNAV)

(DARTZ8.DARTZ) 10OCT19

DALLAS-FORT WORTH, TEXAS

DALLAS-FORT WORTH INTL (DFW)

SC-2, 25 FEB 2021 to 25 MAR 2021

SC-2, 25 FEB 2021 to 25 MAR 2021