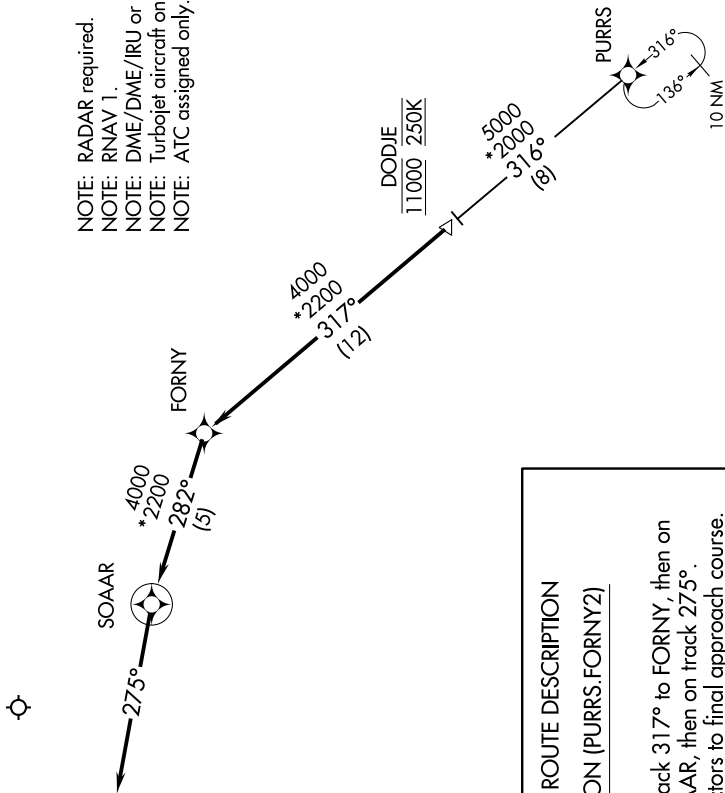


FORNY TWO ARRIVAL (RNAV)

D-ATIS ARR
123.775
REGIONAL APP CON
125.025 263.025



NOTE: RADAR required.
NOTE: RNAV 1.
NOTE: DME/DME/IRU or GPS required.
NOTE: Turbojet aircraft only.
NOTE: ATC assigned only.



ARRIVAL ROUTE DESCRIPTION PURRS TRANSITION (PURRS.FORNY2)

From DODJE on track 317° to FORNY, then on track 282° to SOAAR, then on track 275°. Expect RADAR vectors to final approach course.

NOTE: Chart not to scale.