

# HUDAD TWO DEPARTURE (RNAV)

SC-2, 25 FEB 2021 to 25 MAR 2021

**TOP ALTITUDE:**  
 RWY 17C/R, 18L/R,  
 35C/L, 36L/R: 10000  
 RWY 31L/R: 5000

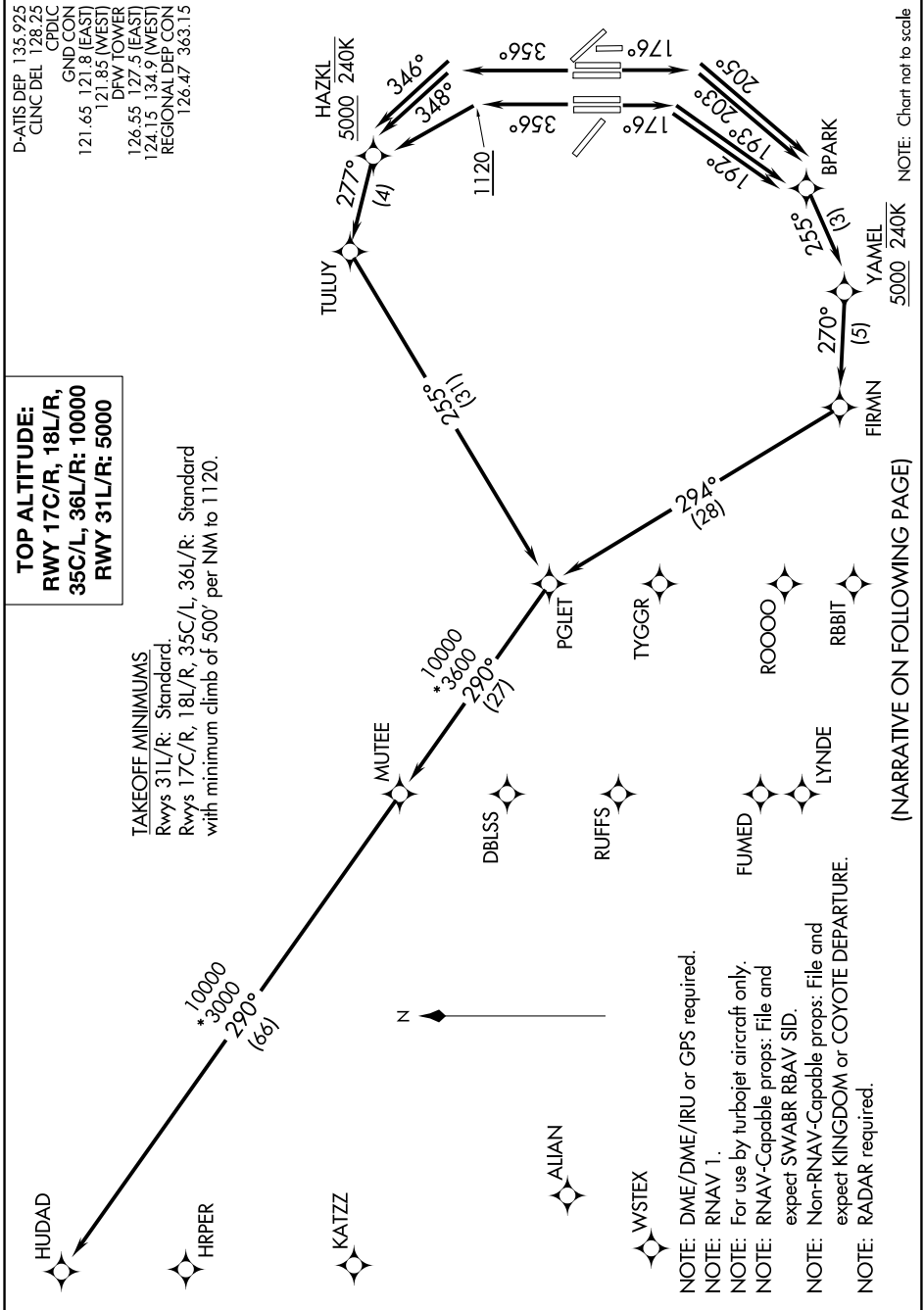
### TAKEOFF MINIMUMS

Rwys 31L/R: Standard.

Rwys 17C/R, 18L/R, 35C/L, 36L/R: Standard

with minimum climb of 500' per NM to 1120.

DATIS DEP 135.925  
 CINC DEL 128.25  
 CPDLC  
 GND CON  
 121.65 121.8 (EAST)  
 121.85 (WEST)  
 DRW TOWER  
 126.55 127.5 (EAST)  
 124.15 134.9 (WEST)  
 REGIONAL DEP CON  
 126.47 363.15



NOTE: Chart not to scale

(NARRATIVE ON FOLLOWING PAGE)

SC-2, 25 FEB 2021 to 25 MAR 2021

# HUDAD TWO DEPARTURE (RNAV)