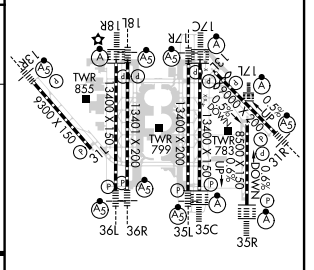
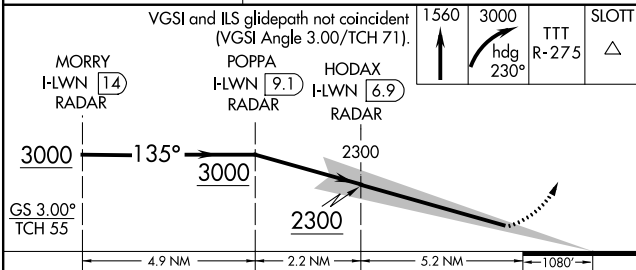
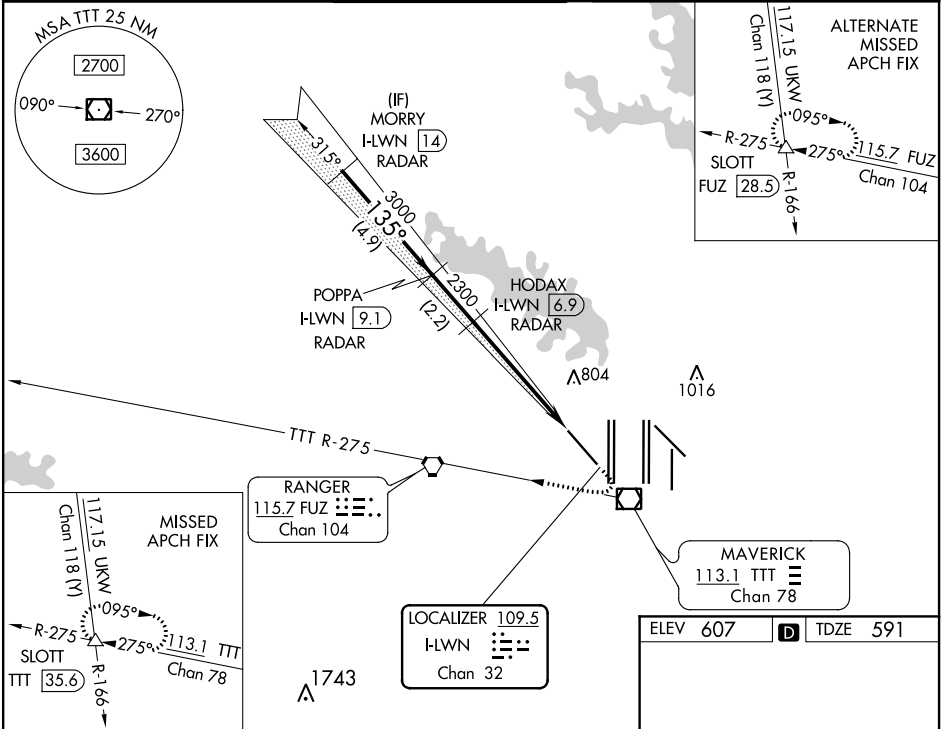


LOC/DME I-LWN 109.5 Chan 32	APP CRS 135°	Rwy Idg TDZE Apt Elev 9300 591 607
---	------------------------	--

ILS RWY 13R (SA CAT I & II)

DALLAS-FORT WORTH INTL (DFW)

RADAR required for procedure entry.		MALSR 	MISSED APPROACH: Climb to 1560 then climbing right turn to 3000 on heading 230° and TTT VOR/DME R-275 to SLOTT INT/TTT 35.6 DME and hold.		
SA Cat I: Requires specific OPSPEC, MSPEC, or LOA approval and use of HUD to DH. SA Cat II: Reduced lighting: Requires specific OPSPEC, MSPEC, or LOA approval and use of autoland or HUD to touchdown.					
D-ATIS ARR 123.775 DEP 135.925	REGIONAL APP CON 133.15 118.1	DFW TOWER 126.55 127.5 EAST 124.15 134.9 WEST	GND CON 121.65 121.8 EAST 121.85 WEST	CLNC DEL 128.25	CPDLC



CATEGORY	A	B	C	D
S-ILS 13R	SA CAT I	RA 149/14	150 DA 741	
S-ILS 13R	SA CAT II	RA 99/12	100 DA 691	

SA CATEGORY I & II ILS SPECIAL AIRCREW & AIRCRAFT CERTIFICATION REQUIRED

HIRL all Rwys
REIL Rwys 13L and 31L
TDZ/CL all Rwys except 13L, and 31L

SC-2, 25 FEB 2021 to 25 MAR 2021

SC-2, 25 FEB 2021 to 25 MAR 2021