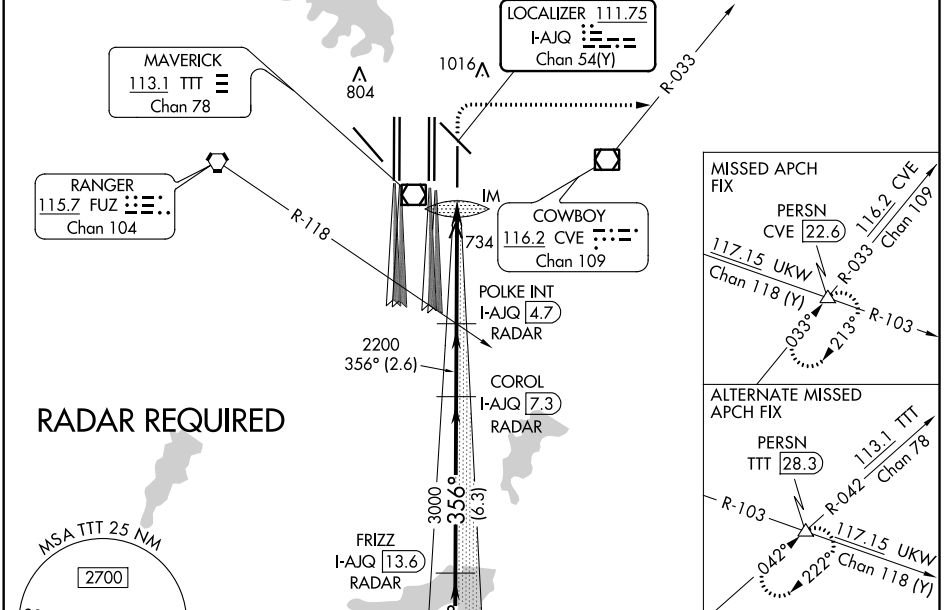


LOC/DME I-AJQ 111.75 Chan 54(Y)	APP CRS 356°	Rwy Idg TDZE Apt Elev 8500 575 607
--	------------------------	--

ILS RWY 35R (CAT II & III)

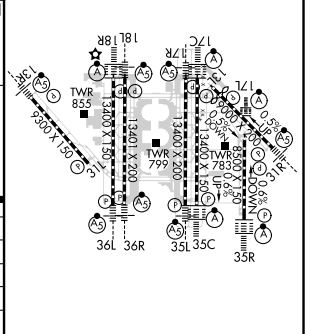
DALLAS-FORT WORTH INTL (DFW)

D-ATIS ARR 123.775 DEP 135.925		REGIONAL APP CON 119.4	DFW TOWER 126.55 127.5 EAST 124.15 134.9 WEST	GND CON 121.65 121.8 EAST 121.85 WEST	CLNC DEL 128.25	CPDLC
--	--	----------------------------------	---	---	---------------------------	-------



GALOP I-AJQ 16.7 RADAR 5000 356° GS 3.00° TCH 58 VGS1 and ILS glidepath not coincident (VGS1 Angle 3.00/TCH 73). 3.1 NM 6.3 NM 2.6 NM 4.9 NM 1375'		FRIZZ I-AJQ 13.6 RADAR 3000 2200	COROL I-AJQ 7.3 RADAR 2200	POLKE INT I-AJQ 4.7 RADAR 2200	1040 3000 hdg 090° I-AJQ DME ANTENNA IM 671	CVE R-033 PERSN
CATEGORY	A	B	C	D		
S-ILS 35R	CAT II RA 94/12 100 DA 675					
S-ILS 35R	CAT IIIa RVR 07					
S-ILS 35R	CAT IIIb RVR 06					
S-ILS 35R	CAT IIIc NA					

ELEV 607	TDZE 575
----------	----------



CATEGORY II & III ILS - SPECIAL AIRCREW & AIRCRAFT CERTIFICATION REQUIRED

HIRL all Rwys
REIL Rwys 13L and 31L
TDZ/CL all Rwys except 13L, and 31L

SC-2, 25 FEB 2021 to 25 MAR 2021

SC-2, 25 FEB 2021 to 25 MAR 2021