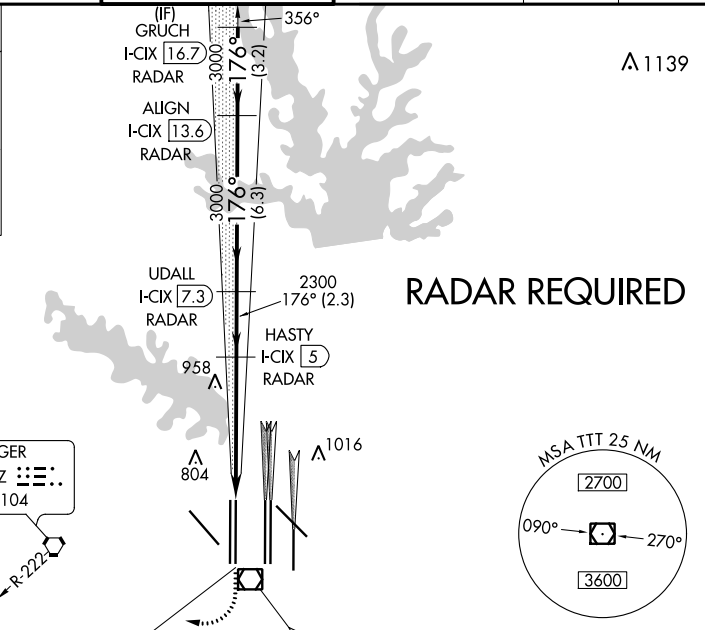
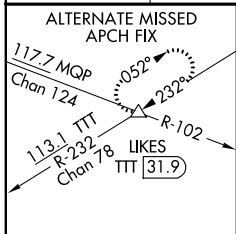


LOC/DME I-CIX 110.55 Chan 42 (Y)	APP CRS 176°	Rwy 18L Idg 13401 TDZE 602 Apt Elev 607	Rwy 18R Idg 13400 TDZE 607 Apt Elev 607
--	------------------------	--	--

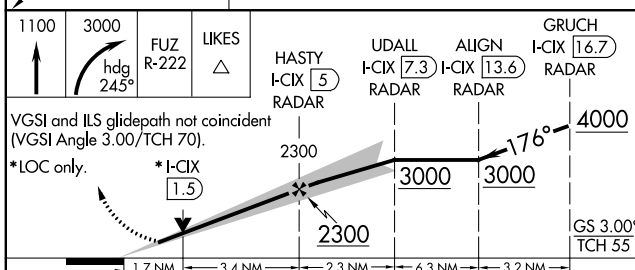
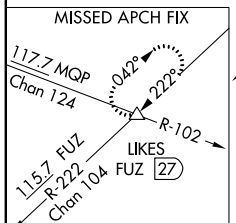
ILS or LOC RWY 18L

DALLAS-FORT WORTH INTL (DFW)

<p>⚠ Simultaneous approach authorized with Rwy 17L/C/R. For inop MALSR/ALSF, increase S-LOC 18L Cat C/D and sidestep 18R Cat C visibility to 1 1/4 mile. Inop table does not apply to sidestep 18R Cats A and B. DME or RADAR required.</p>		Rwy 18L MALSR 	Rwy 18R ALSF-2 	MISSED APPROACH: Climb to 1100, then climbing right turn to 3000 on heading 245° and FUZ VORTAC R-222 to LIKES INT/FUZ 27 DME and hold.		
D-ATIS ARR 123.775 DEP 135.925	REGIONAL APP CON 118.425	DFW TOWER 126.55 127.5 EAST 124.15 134.9 WEST		GND CON 121.65 121.8 EAST 121.85 WEST	CLNC DEL 128.25	CPDLC



RADAR REQUIRED



CATEGORY	A	B	C	D
S-ILS 18L		802/18	200 (200-1/2)	
S-LOC 18L	1220/24	618 (700-1/2)	1220-1 3/8	618 (700-1 3/8)
SIDESTEP 18R	1220/50	613 (700-1)	1220-1 3/8	1220-1 1/2
			613 (700-1 3/8)	613 (700-1 1/2)

ELEV 607 **D** TDZE 602 18L
TDZE 607 18R

176° 5.2 NM from FAF

HIRL all Rwys
REIL Rwys 13L and 31L
TDZ/CL all Rwys except 13L and 31L

FAF to MAP 5.2 NM

Knots	60	90	120	150	180
Min:Sec	5:12	3:28	2:36	2:05	1:44

SC-2, 25 FEB 2021 to 25 MAR 2021

SC-2, 25 FEB 2021 to 25 MAR 2021