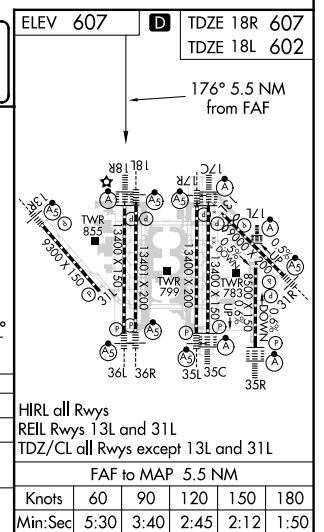
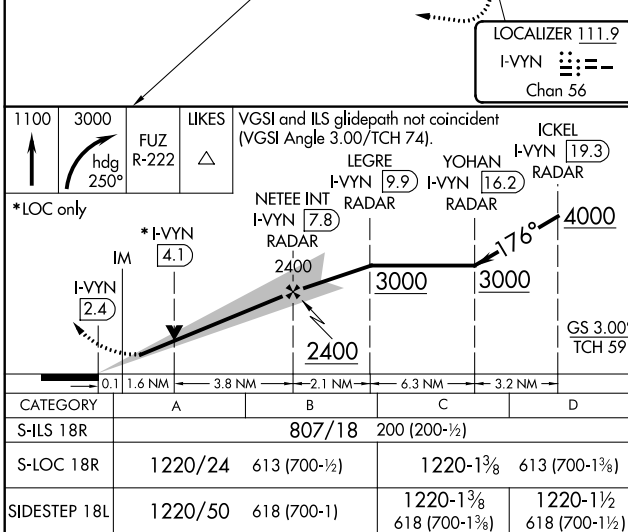
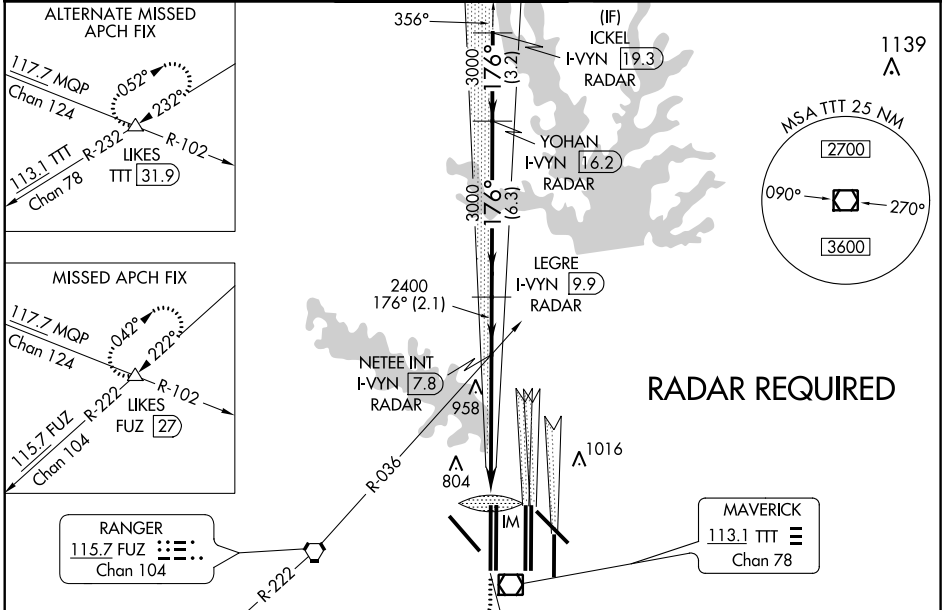


LOC/DME I-VYIN <b>111.9</b> Chan <b>56</b>	APP CRS <b>176°</b>	Rwy Idg TDZE Apt Elev	18R <b>13400</b> <b>607</b> <b>607</b>	18L <b>13401</b> <b>602</b> <b>607</b>
--	------------------------	-----------------------------	---	---

# ILS or LOC RWY 18R

DALLAS-FORT WORTH INTL (DFW)

<p>▼ Inop table does not apply to Sidestep 18L Cats A and B. DME or RADAR required. Simultaneous approach authorized with Rwy 17 L/C/R. For inop ALSF/MALSR, increase S-LOC 18R Cat C/D and Sidestep 18L Cat C visibility to 1/4 mile.</p>		Rwy 18R ALSF-2 	Rwy 18L MALSR 	MISSED APPROACH: Climb to 1100 then climbing right turn to 3000 on heading 250° and FUZ VORTAC R-222 to LIKES INT/FUZ VORTAC 27 DME and hold.	
D-ATIS ARR <b>123.775</b> DEP <b>135.925</b>	REGIONAL APP CON <b>118.425</b>	DFW TOWER <b>126.55 127.5</b> EAST <b>124.15 134.9</b> WEST	GND CON <b>121.65 121.8</b> EAST <b>121.85</b> WEST	CLNC DEL <b>128.25</b>	CPDLC



SC-2, 25 FEB 2021 to 25 MAR 2021

SC-2, 25 FEB 2021 to 25 MAR 2021