

LOC/DME I-PKQ <b>110.3</b> Chan 40	APP CRS <b>356°</b>	Rwy 35C Idg <b>13400</b> TDZE <b>563</b> Apt Elev <b>607</b>	Rwy 35L Idg <b>13400</b> TDZE <b>564</b> Apt Elev <b>607</b>
--	------------------------	--	--

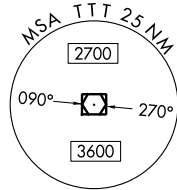
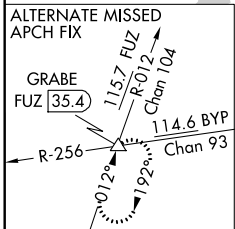
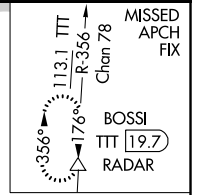
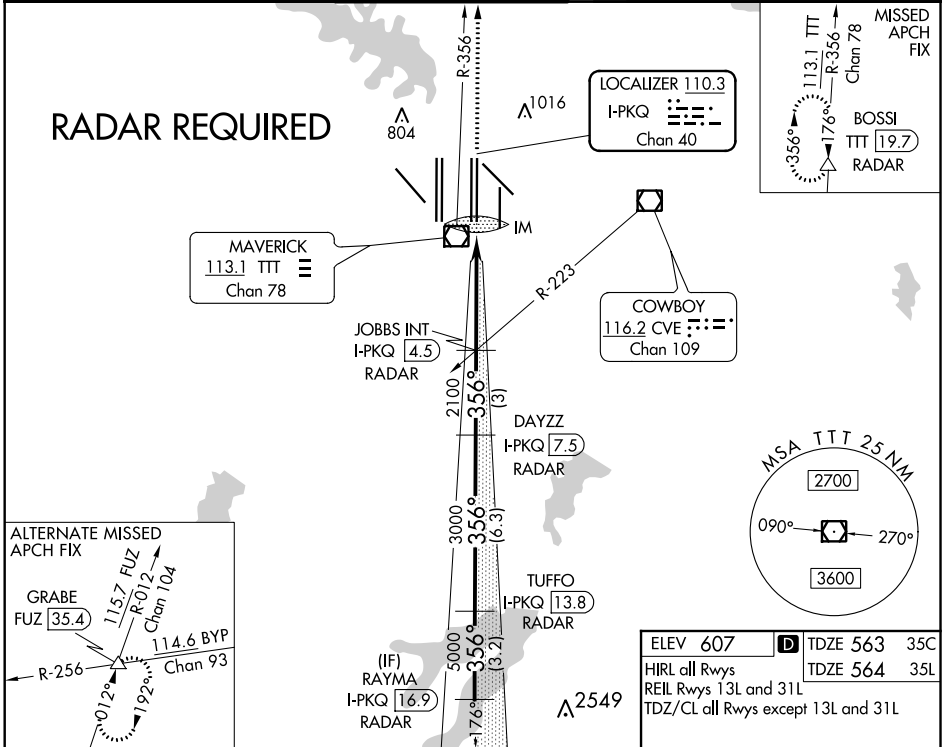
# ILS or LOC RWY 35C

DALLAS-FORT WORTH INTL (DFW)

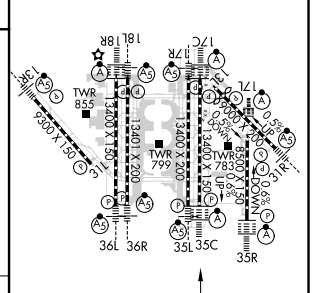
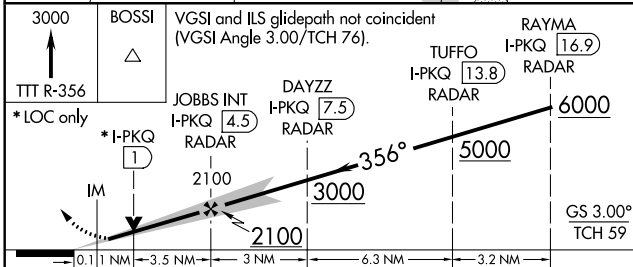
**▼** Inoperative table does not apply to Sidestep Rwy 35L Cats A and B. DME or RADAR required. Simultaneous approach authorized with Rwy 35R, Rwy 36L/R.

Rwy 35C ALSF-2 **(A)** Rwy 35L MALSR **(AS)** MISSED APPROACH: Climb to 3000 on TTT VOR/DME R-356 to BOSSI/TTT 19.7 DME/RADAR and hold.

D-ATIS ARR <b>123.775</b> DEP <b>135.925</b>	REGIONAL APP CON <b>127.075</b>	DFW TOWER <b>126.55 127.5</b> EAST <b>124.15 134.9</b> WEST	GND CON <b>121.65 121.8</b> EAST <b>121.85</b> WEST	CLNC DEL <b>128.25</b>	CPDLC
--	------------------------------------	---	---	---------------------------	-------



ELEV 607	<b>D</b> TDZE 563 35C
HIRL all Rwys	TDZE 564 35L
REIL Rwys 13L and 31L	
TDZ/CL all Rwys except 13L and 31L	



CATEGORY	A	B	C	D
S-ILS 35C	763/18		200 (200-½)	
S-LOC 35C	1000/24	437 (400-½)	1000/40	437 (400-¾)
SIDESTEP 35L	1000/55		436 (400-1)	
			1000-1½	436 (400-1½)

FAF to MAP 4.6 NM					
Knots	60	90	120	150	180
Min:Sec	4:36	3:04	2:18	1:50	1:32

SC-2, 25 FEB 2021 to 25 MAR 2021

SC-2, 25 FEB 2021 to 25 MAR 2021