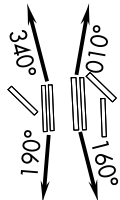


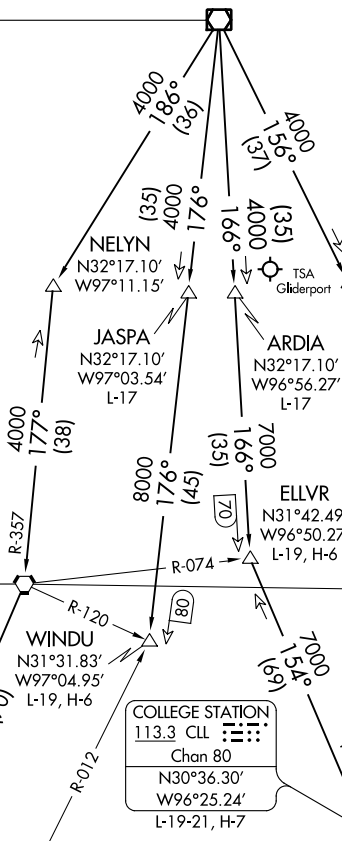
JOE POOL TWO DEPARTURE

TOP ALTITUDE:
RWY 13L/R, 17L/C/R, 18L/R,
35L/C/R, 36L/R: 10000
RWY 31L/R: 5000

D-ATIS DEP 135.925
CLNC DEL 128.25
CPDLC
GND CON
121.65 121.8 (EAST)
121.85 (WEST)
DFW TOWER
126.55 127.5 (EAST)
124.15 134.9 (WEST)
REGIONAL DEP CON
125.125 353.95 (Rwy 17C/R, 18L/R)
126.475 363.15 (Rwy 36R/L)
118.55 290.35 (Rwy 35L/C)



MAVERICK
113.1 TTT
Chan 78
N32°52.15'
W97°02.43'



WACO
115.3 ACT
Chan 100
N31°39.73'
W97°16.14'
L-19, H-6

WINDU
N31°31.83'
W97°04.95'
L-19, H-6

COLLEGE STATION
113.3 CLL
Chan 80
N30°36.30'
W96°25.24'
L-19-21, H-7

HOARY
N30°34.63'
W97°46.52'
L-19-21, H-7

CENTEX
112.8 CWK
Chan 75

SAN ANTONIO
116.8 SAT
Chan 115
N29°38.64'-W98°27.68'
L-19, H-7

NAVASOTA
115.9 TNV
Chan 106

NOTE: RADAR and DME required.
NOTE: Props: Expect KEENE or TRI-GATE departure.
NOTE: Maintain 240K until leaving 5000.

TAKEOFF MINIMUMS
Rwys 13L/R, 17L/C/R, 18L/R, 31L/R,
35L/C, 36L/R: Standard.
Rwy 35R: Standard with a minimum climb
of 240' per NM to 1200.

(NARRATIVE ON FOLLOWING PAGE)

NOTE: Chart not to scale.

SC-2, 25 FEB 2021 to 25 MAR 2021

SC-2, 25 FEB 2021 to 25 MAR 2021

JOE POOL TWO DEPARTURE