

(KNEAD.PAWLZ3) 20198

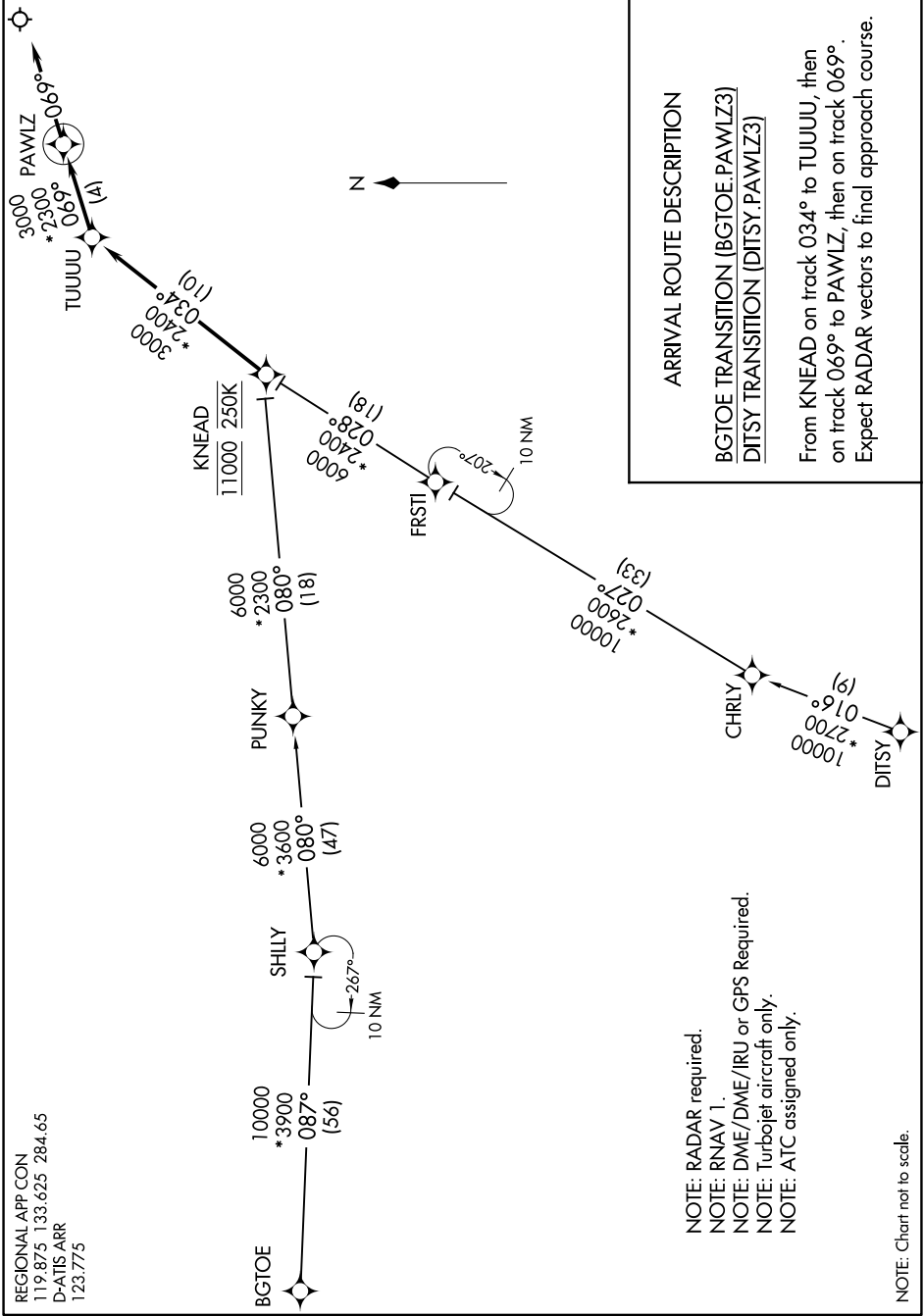
# PAWLZ THREE ARRIVAL (RNAV)

AL-6039 (FAA)

DALLAS-FORT WORTH INTL (DFW)  
DALLAS-FORT WORTH, TEXAS

SC-2, 25 FEB 2021 to 25 MAR 2021

REGIONAL APP CON  
119.875 133.625 284.65  
D-ATIS ARR  
123.775



**ARRIVAL ROUTE DESCRIPTION**

**BGTOE TRANSITION (BGTOE.PAWLZ3)**  
**DITSY TRANSITION (DITSY.PAWLZ3)**

From KNEAD on track 034° to TUUUU, then on track 069° to PAWLZ, then on track 069°. Expect RADAR vectors to final approach course.

NOTE: RADAR required.  
 NOTE: RNAV 1.  
 NOTE: DME/DME/IRU or GPS Required.  
 NOTE: Turbojet aircraft only.  
 NOTE: ATC assigned only.

NOTE: Chart not to scale.

SC-2, 25 FEB 2021 to 25 MAR 2021

# PAWLZ THREE ARRIVAL (RNAV)

(KNEAD.PAWLZ3) 31MAR16

DALLAS-FORT WORTH, TEXAS  
DALLAS-FORT WORTH INTL (DFW)