

WAAS CH 97324 W17D	APP CRS 176°	Rwy Idg 13400 TDZE 562 Apt Elev 607
--	------------------------	--

RNAV (GPS) RWY 17C

DALLAS-FORT WORTH INTL (DFW)

▽ For uncompensated Baro-VNAV systems, LNAV/VNAV NA below -4°C (25°F) or above 54°C (130°F). Simultaneous approach authorized with Rwy 17L and 18L/R. DME/DME RNP-0.3 NA. LNAV procedure NA during simultaneous operations. Use of FD or AP providing RNAV track guidance required during simultaneous operations.

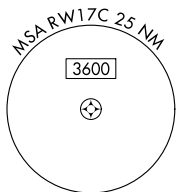
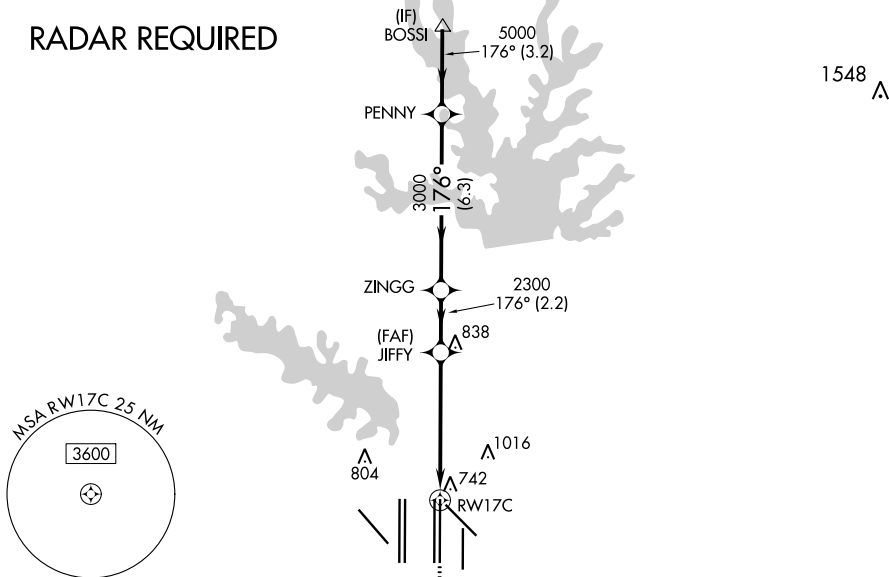
ALSF-2



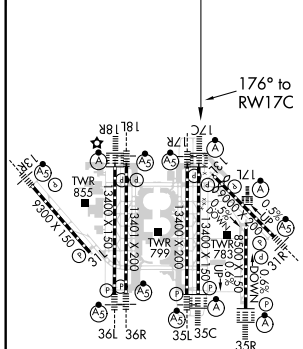
MISSED APPROACH: Climb to at or below 3000 direct YUPRU then climb to 4000 on track 176° to RAYMA and hold.

ATIS ARR 123.775 DEP 135.925	REGIONAL APP CON 127.075	DFW TOWER 126.55 127.5 EAST 124.15 134.9 WEST	GND CON 121.65 121.8 EAST 121.85 WEST	CLNC DEL 128.25	CPDLC
--	------------------------------------	---	---	---------------------------	-------

RADAR REQUIRED



ELEV 607	D	TDZE 562
-----------------	----------	-----------------



HIRL all Rwys
REIL Rwy 13L and 31L
TDZ/CL all Rwy except 13L and 31L

3000	YUPRU	4000	RAYMA	VGSi and RNAV glidepath not coincident (VGSi Angle 3.00/TCH 74).		
↑	✦	↑	✦	BOSSI		
*LNAV only.		JIFFY	ZINGG	PENNY	BOSSI	
	*1.1 NM to RW17C	2300	3000	5000	6000	
		2300			GP 3.00° TCH 58	
	1.1 NM	4.2 NM	2.2 NM	6.3 NM	3.2 NM	
CATEGORY	A		B		C	D
LPV DA			762/18		200 (200-½)	
LNAV/VNAV DA			1068/60		506 (500-¼)	
LNAV MDA	1000/24		438 (400-½)		1000/40 438 (400-¾)	