

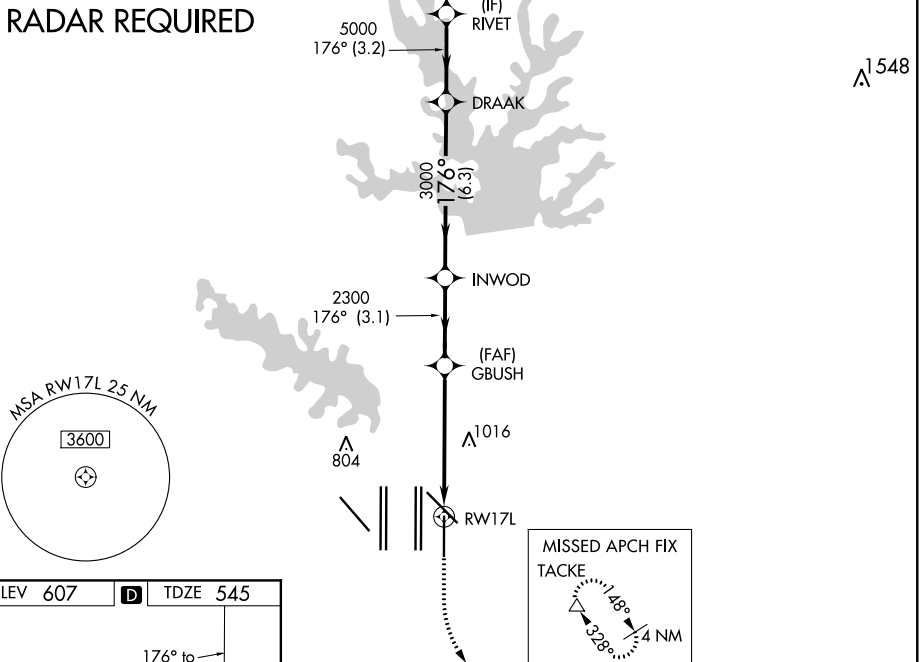
WAAS CH 40008 W17B	APP CRS 176°	Rwy Idg TDZE Apt Elev	8500 545 607
--	------------------------	-----------------------------	---

RNAV (GPS) RWY 17L

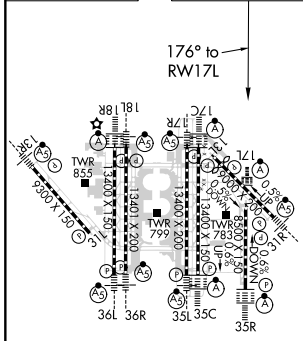
DALLAS-FORT WORTH INTL (DFW)

<p>▼ For uncompensated Baro-VNAV systems, LNAV/VNAV NA below -5°C (23°F) or above 54°C (130°F). DME/DME RNP-0.3 NA. Simultaneous approach authorized with Rwy 17C/R and Rwy 18L/R. LNAV procedure NA during simultaneous operations. Use of FD or AP providing RNAV track guidance required during simultaneous operations.</p>		<p>ALSF-2</p>	<p>MISSED APPROACH: Climb to 1020 then climbing left turn to 3000 direct TACKE and hold.</p>		
D-ATIS ARR 123.775 DEP 135.925	REGIONAL APP CON 119.4	DFW TOWER 126.55 127.5 EAST 124.15 134.9 WEST	GND CON 121.65 121.8 EAST 121.85 WEST	CLNC DEL 128.25	CPDLC

RADAR REQUIRED



ELEV 607	D	TDZE 545
-----------------	----------	-----------------



HIRL all Rwys
REIL Rws 13L and 31L
TDZ/CL all Rws except 13L and 31L

1020	3000	TACKE	VGSi and RNAV glidepath not coincident (VGSi Angle 3.00/TCH 77).	
*LNAV only.		GBUSH	DRAAK	RIVET
*2 NM to RWY 17L		2300	3000	5000
RWY 17L		2300	3000	5000
-2 NM		3.4 NM	3.1 NM	-6.3 NM
-3.2 NM				
GP 3.00°	TCH 56			
CATEGORY	A	B	C	D
LPV DA	745/18		200 (200-½)	
LNAV/VNAV DA	1063/60		518 (500-1½)	
LNAV MDA	1240/24	695 (700-½)	1240-1½	695 (700-1½)

SC-2, 25 FEB 2021 to 25 MAR 2021

SC-2, 25 FEB 2021 to 25 MAR 2021